

14005H

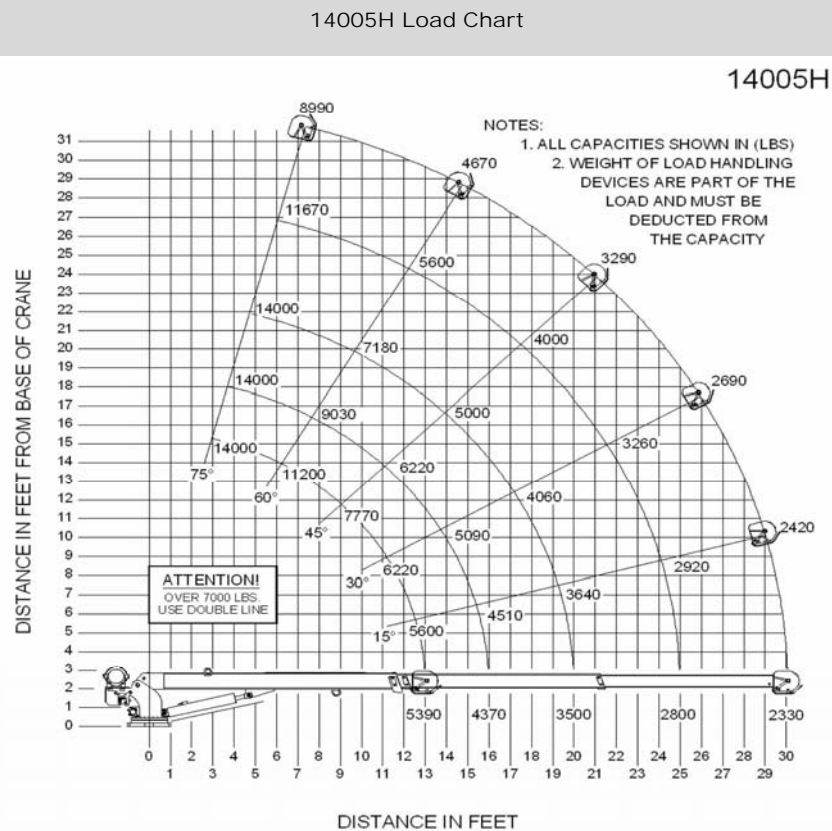
Specifications

Weight	3,200 lbs (1,454 kgs)
Length	15' 9" (4.8 m)
Width	2.5" (.62 m)
Height	3' 2.13" (.97 m)
Hydraulic Requirements	15 gallons (56.9 L) per minute, at 2,800 psi (193.0 bar)
Base Plate Dimensions	20.5" x 24.5" (.52 m x .62 m)
Boom Down	22-26 seconds (full stroke of cylinder)
Boom Retract	47-56 seconds (full stroke of cylinder)
Full 360° Boom Rotation	35-43 seconds

*Truck must be equipped with appropriate outriggers, throttle control, tachometer, PTO, pump and hydraulic reservoir.

Lifting Capacities

Reach	Manual/Power Boom Extension
3' (.9 m)	14,000 lbs (6,350 kgs)
4' (1.2 m)	14,000 lbs (6,350 kgs)
5' (1.5 m)	14,000 lbs (6,350 kgs)
6' (1.8 m)	11,670 lbs (5,290 kgs)
7' (2.1 m)	10,000 lbs (4,540 kgs)
8' (2.4 m)	8,750 lbs (3,970 kgs)
9' (2.7 m)	7,780 lbs (3,530 kgs)
10' (3.0 m)	7,000 lbs (3,180 kgs)
12' (3.7 m)	5,830 lbs (2,650 kgs)
14' (4.3 m)	5,000 lbs (2,270 kgs)
16' (4.9 m)	4,380 lbs (1,980 kgs)
18' (5.5 m)	3,890 lbs (1,760 kgs)
20' (6.1 m)	3,500 lbs (1,590 kgs)
22' (6.7 m)	3,180 lbs (1,440 kgs)
24' (7.3 m)	2,920 lbs (1,320 kgs)
26' (7.9 m)	2,690 lbs (1,220 kgs)
28' (8.5 m)	2,500 lbs (1,130 kgs)
30' (9.1 m)	2,330 lbs (1,060 kgs)



Auto Crane Company / 4707 N. Mingo Rd. Tulsa, OK 74117
 918-836-0463 / AutoCrane.com

