

8406H

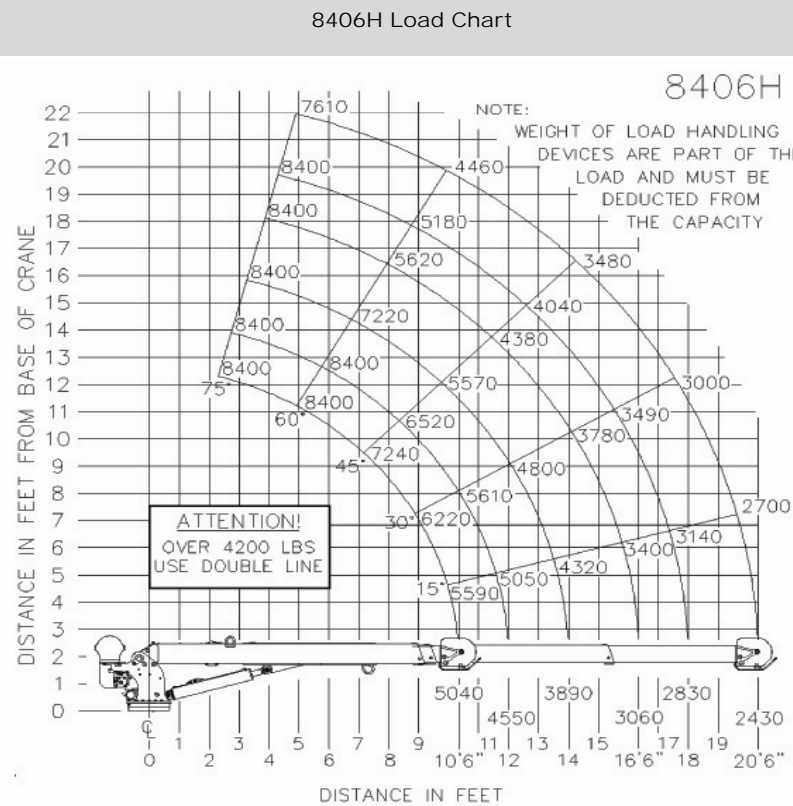
Specifications

Weight	1,750 lbs (794 kgs)
Length	13.94" (3.98 m)
Width	1' 11" (.56 m)
Height	2' 11" (.89 m)
Hydraulic Requirements	13 gallons (49.2 L) per minute, at 2,750 psi (189.6 bar)
Base Plate Dimensions	16.75" x 16.75" (.43 m x .43 m)
Boom Down	20-28 seconds (full stroke of cylinder)
Boom Retract	18-24 seconds (full stroke of cylinder)
Full 360° Boom Rotation	42-46 seconds

*Truck must be equipped with appropriate outriggers, throttle control, tachometer, PTO, pump and hydraulic reservoir.

Lifting Capacities

Reach	Manual/Power Boom Extension
5' (1.5 m)	8,400 lbs (3,810 kgs)
6' (1.8 m)	8,400 lbs (3,810 kgs)
7' (2.1 m)	7,143 lbs (3,240 kgs)
8' (2.4 m)	6,250 lbs (2,835 kgs)
9' (2.7 m)	5,556 lbs (2,520 kgs)
10' (3.0 m)	5,000 lbs (2,268 kgs)
11' (3.4 m)	4,545 lbs (2,062 kgs)
12' (3.7 m)	4,167 lbs (1,890 kgs)
13' (4.0 m)	3,846 lbs (1,745 kgs)
14' (4.3 m)	3,571 lbs (1,620 kgs)
15' (4.6 m)	3,333 lbs (1,512 kgs)
16' (4.9 m)	3,125 lbs (1,417 kgs)
17' (5.2 m)	2,941 lbs (1,334 kgs)
18' (5.5 m)	2,778 lbs (1,260 kgs)
19' (5.8 m)	2,632 lbs (1,194 kgs)
20' (6.1 m)	2,500 lbs (1,134 kgs)



Auto Crane Company / 4707 N. Mingo Rd. Tulsa, OK 74117
918-836-0463 / AutoCrane.com

