


NexStar™ 4

WHY NEXSTAR 4?

 **AutoDeploy™ / AutoStow™**
One-button setup and stow

 **Bluetooth Diagnostics**
Remote troubleshooting via smartphone

 **Proportional Control**
4 joystick functions at 4 speeds

 **Speed Modes**
Adjustable between 25% – 100%

- Crane Management System identifies the angle of the truck and the boom, preventing unsafe operation in unstable situations.
- Fully independent proportional control with multiple speed settings enables precise control over load placement.
- LCD display, status lights and audible alarm communicate critical information and diagnostics, keeping the operator informed and in control.

AUTO CRANE®
A Ramsey Industries Brand



Over 65 Years

Power	Model	Max Lift Capacity (lb)	Moment Rating (ft-lb)	Max Reach	Weight (lbs)	Control Types Available	Hoist Type	Configurations			
Electric	EC-2	2,000	6,500	5 ft 0 in 7 ft 1 in	230 255	Non-Proportional, Hard-Wired	Electric	Tall / Short Pedestal			
	EC-2X	2,000	6,000	9 ft 3 in	346	Non-Proportional, Hard-Wired	Electric/Worm	Manual Boom Extension and Rotation, Electric Hoist			
Electric-Hydraulic	EHC-3 ²	3,200	10,000	15 ft 4 in	690	NexStar Independent Proportional, Wireless	Hydraulic/Planetary	Boom: Fully Manual/Mid-Hydraulic/Fully Hydraulic Extension			
						Non-Proportional, Wireless (Tether Option) or Hard-Wired	Electric/Worm	Rotation: Continuous			
	EHC-4	4,000	16,000	16 ft 0 in 20 ft 4 in	920 1,055	NexStar Independent Proportional, Wireless	Hydraulic/Planetary	Boom: Hydraulic-Manual Extension			
						Non-Proportional, Wireless (Tether Option) or Hard-Wired	Electric/Worm	Rotation: Continuous			
	EHC-5	5,000	25,000	20 ft 4 in	1,470	Non-Proportional, Wireless (Tether Option) or Hard-Wired	Electric/Worm	Boom: Hydraulic Extension Rotation: Continuous or Non-continuous			
	EHC-6	6,000	36,000	20 ft 4 in	1,210	NexStar Independent Proportional, Wireless	Electric/Worm	Rotation: Non-continuous			
						Non-Proportional, Hard-Wired		Rotation: Continuous or Non-continuous			
	Hydraulic	HC-3 ²	3,200	10,000	15 ft 4 in	640	Proportional, Wireless (Tether Option) or Hard-Wired	Hydraulic/Worm	Boom: Hydraulic-Manual Extension		
HC-5		5,000	25,000	20 ft 4 in	1,390	NexStar Independent Proportional, Wireless/Tethered Proportional, Hard-Wired	Hydraulic/Planetary	Boom: Hydraulic Extension			
HC-6		6,000	35,000	20 ft 4 in	1,190						
HC-7		7,000	38,000	20 ft 6 in	1,705						
HC-7X		7,000	43,000	30 ft 2 in	1,850						
HC-8		8,000	4,9000	20 ft 6 in	1,705						
		7,000	3,8000								
HC-8X		8,000	53000	30 ft 2 in	1,867						
7,000		43000									
HC-9		9,000	59,000	20 ft 6 in	1,715						
HC-10		10,000	60,000	25 ft 4 in	1,940						
HC-12s		12,000	60,000	25 ft 4 in	2,023						
HC-12	12,000	85,000	30 ft 0 in	3,040							
HC-14	14,000	85,000	30 ft 0 in	3,200							

Electric Series

- Up to 2,000 lbs lift capacity with 5' to 9' of reach
- Most economical solution without crane operator certification

Electric-Hydraulic Series

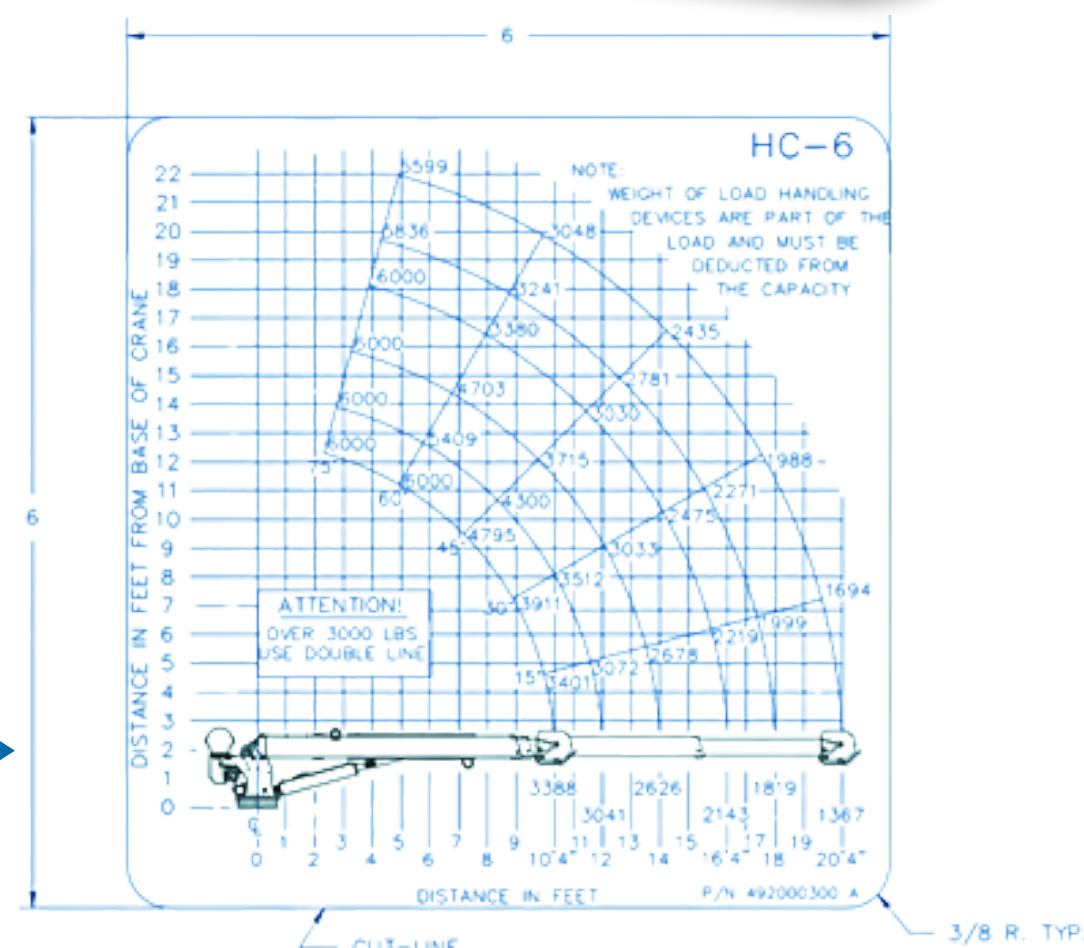
- Most popular cranes in the market with proven reliability
- NexStar option far outperforms both non-proportional and competitive cranes with 2x times higher duty cycle

Hydraulic Series

- Industry-leading NexStar crane management system
- Independent proportional control allows for greater productivity
- 100% lift capacity and full stability around the Titan body with only rear outriggers

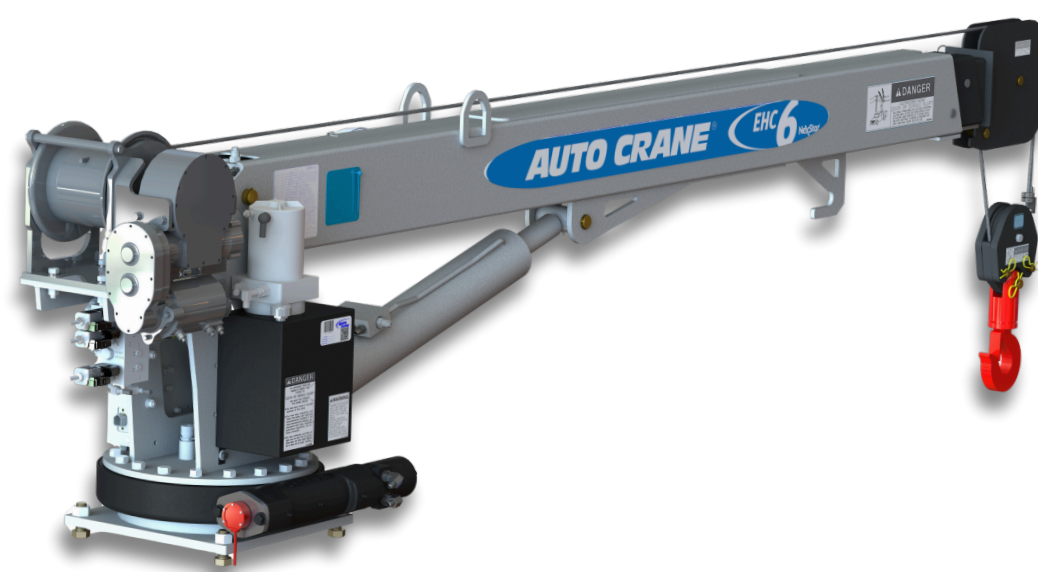


Capacity Increase →



Weight Reduction

- HC-6: Reduced by 220 lb—now only 1200 lb (previously 1420 lb)
- EHC-6: Reduced by 400 lb—now only 1210 lb (previously 1610 lb)



LIGHTER DESIGNS MEAN GREATER FUEL EFFICIENCY AND IMPROVED PORTABILITY