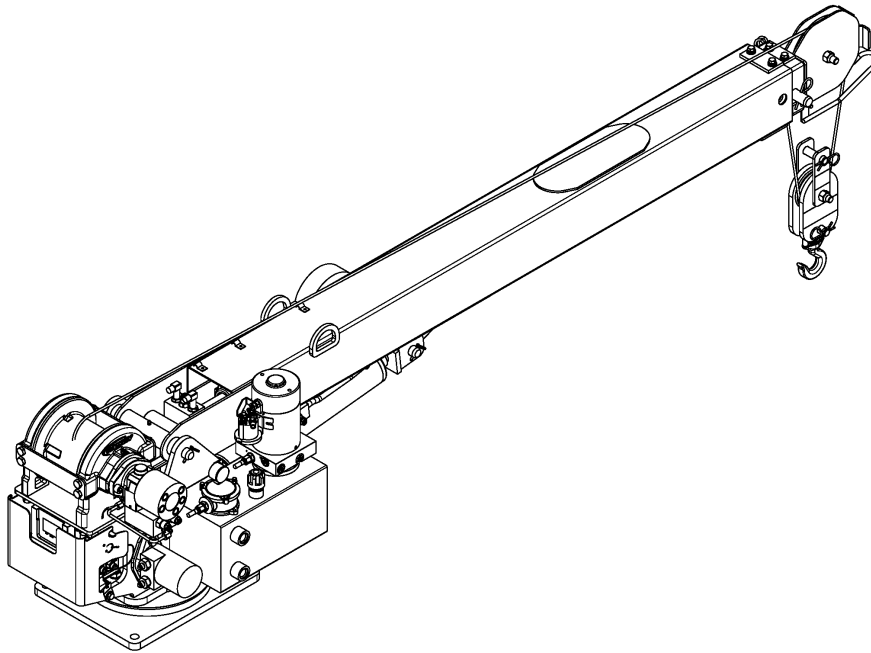




**3203 PRX HW  
WITH HORN  
ADDENDUM**

**OWNERS MANUAL**

**Manual No. 320991038**



**Serial No. \_\_\_\_\_**

**Mailing Address:**

**P.O. Box 580697**

**Tulsa, OK 74158-0697**

**Physical Address:**

**Phone 1-800-777-2760**

**Fax 1-888-848-5445**

**<http://www.autocrane.com>**

**3203 PRX HW**  
***TABLE OF CONTENTS***

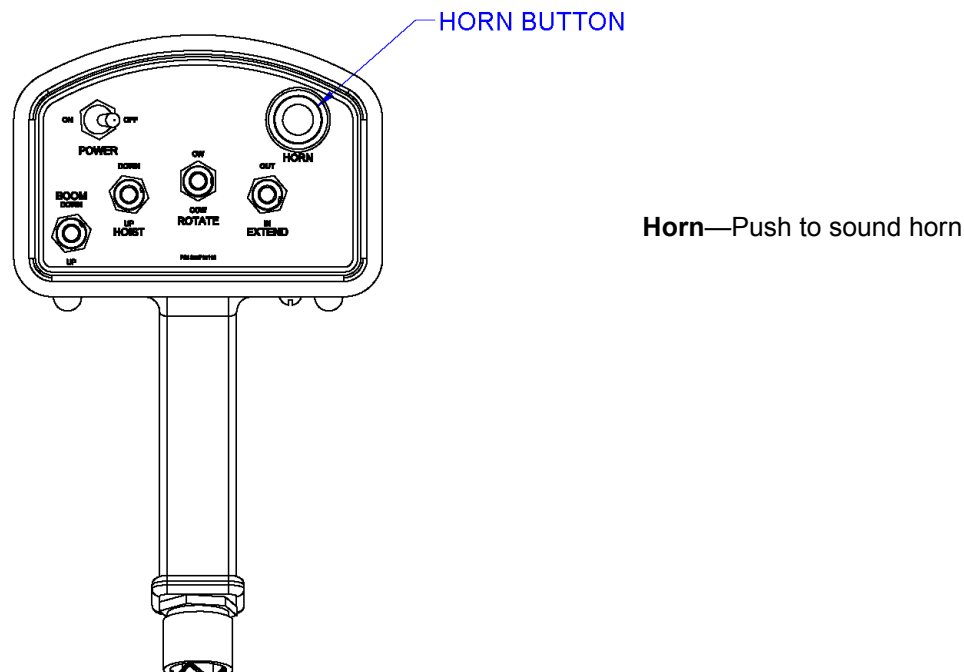
CRANE OPERATION	A-1
MOUNTING AND INSTALLATION	A-2
GENERAL ASSEMBLY	A-3
PEDESTAL ASSEMBLY	A-5
RELAY PANEL	A-11

# CRANE OPERATION

## TRANSMITTER LAYOUT

There is a red light to the left of the *ON/OFF Toggle switch* and a yellow light to the right. As the battery runs down, the red light will begin to flash as well as the yellow light. If the yellow light is rapidly flashing this indicates that the unit is transmitting. Refer to the Transmitter Diagnostics Section for a detailed explanation of each light combination. In addition to the two lights mentioned above there are four function toggle switches. These functions from left to right are to be used to raise and lower the boom, raise and lower the hoist cable, rotate the crane and extend and retract the boom.

## TRANSMITTER LAYOUT



### POWER ON/OFF TOGGLE SWITCH

The transmitter is powered by 4-AA alkaline batteries, located under the back cover of the housing. To turn the transmitter on, press and hold the *Power On Toggle*, release once the transmit light starts blinking. To turn the unit off, press and hold the power off toggle, release after the transmit light stops flashing.

### FUNCTION SWITCHES

To operate a function, toggle one of the function switches with either the thumb of the hand holding the unit or the thumb or fingers of the opposite hand. More than one function can be activated at one time.

### CARE

**KEEP DRY.** Do not clean the transmitter / receiver under high pressure. If water or other liquids get inside the transmitter battery or receiver compartment, immediately dry the unit. Remove the case and let the unit air dry.

### WELDING

**DISCONNECT THE RADIO RECEIVER BEFORE WELDING** on the crane, load, or truck. Failure to disconnect will result in the destruction of the radio receiver.

# 3203PRX HW

## ***MOUNTING AND INSTALLATION***

ITEM NO.	QTY	PART NUMBER	DESCRIPTION
1	1	320433	TRAVELING BLOCK ASSEMBLY
2	1	680179110	PENDANT, 8 FUNCTION, ON/OFF, W/HORN
3	1	320950001	OWNER'S MANUAL, 3203, HW, REMOTE PENDANT
4	1	320991038	OWNER'S MANUAL, 3203, HW, W/HORN ADDENDUM
5	1	320988005	DECAL 3203 LOAD CHART
6	6	000838000	CLIP, CABLE #838
7	4	404226000	SCR HX HD 3/4-16UNF x 3 LG GR 8
8	4	404227000	NUT HX 3/4-16UNF, GR 8
9	4	022101000	WASHER SP LK 3/4

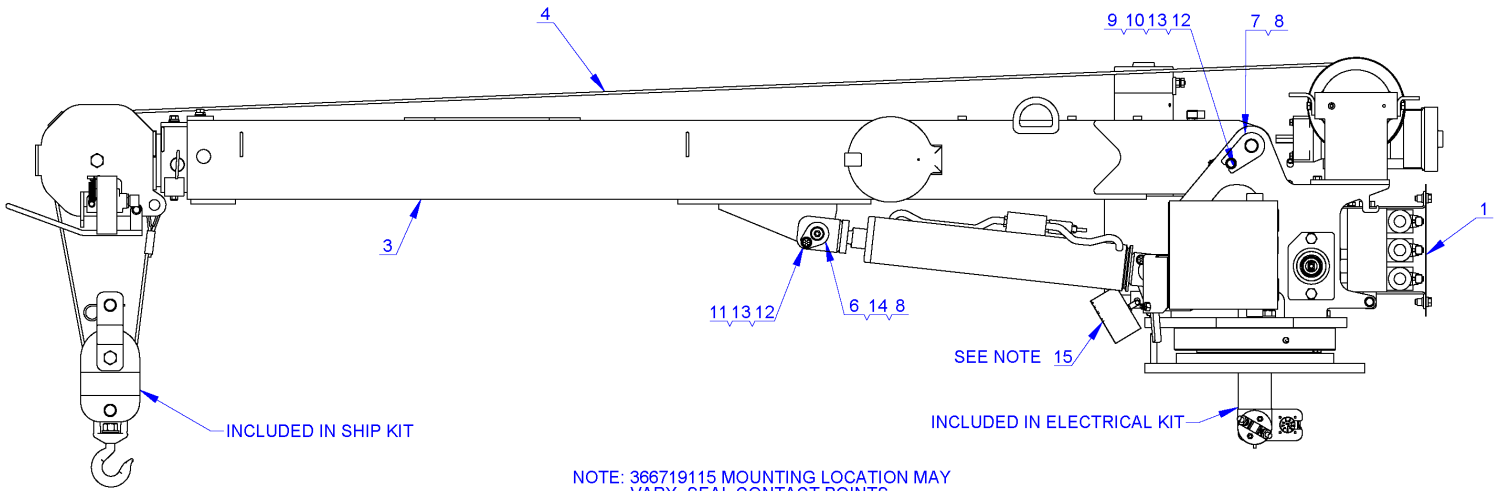
1. Vehicle should meet minimum GVW Rating of 10,500 pounds (does not include bodies or accessories).
2. Make sure mounting surface is properly reinforced to withstand 8,800 ft-lb capacity loading of crane and that outriggers are used to provide total stability for the truck.
3. A 9" dia. Hole should be cut out of mounting location (centered with mounting bolts) for access. Reference general dimensions for bolt pattern.
4. Make sure the mounting bolts are 3/4"-16UNF Grade 8. Torque bolts to 335 ft-lbs (dry).
5. When crane is not in operation, a boom support should always be used and the traveling block should be connected to the hook loop.
6. See the following pages for additional electrical installation.
7. Load test the crane to ensure proper functioning and truck stability.
8. Make certain the owner's manual is delivered to the customer.
9. For additional help: call the service department at the Auto Crane Company.  
(918) 836-0463 (Tulsa, Oklahoma).

### **WARNING**

**FEDERAL LAW** (49 CFR PART 571) REQUIRES THAT THE FINAL STAGE MANUFACTURER OF A VEHICLE CERTIFY THAT THE BEHICLE COMPLIES WITH ALL APPLICABLE FEDERAL REGULATIONS. ANY MODIFICATIONS PERFORMED ON THE VEHICLE PRIOR TO THE FINAL STAGE ARE ALSO CONSIDERED INTERMEDIATE STAGE MANUFACTURING AND MUST BE CERTIFIED AS TO COMPLIANCE. THE INSTALLER OF THIS CRANE AND BODY IS CONSIDERED ONE OF THE MANUFACTURERS OF THE VEHICLE. AS SUCH A MANUFACTURER, THE INSTALLER IS RESPONSIBLE FOR COMPLIANCE WITH ALL APPLICABLE FEDERAL AND STATE REGULATIONS, AND IS REQUIRED TO CERTIFY THAT THE VEHICLE IS IN COMPLIANCE.

# 3203PRX HW GENERAL ASSEMBLY

P/N 320989015



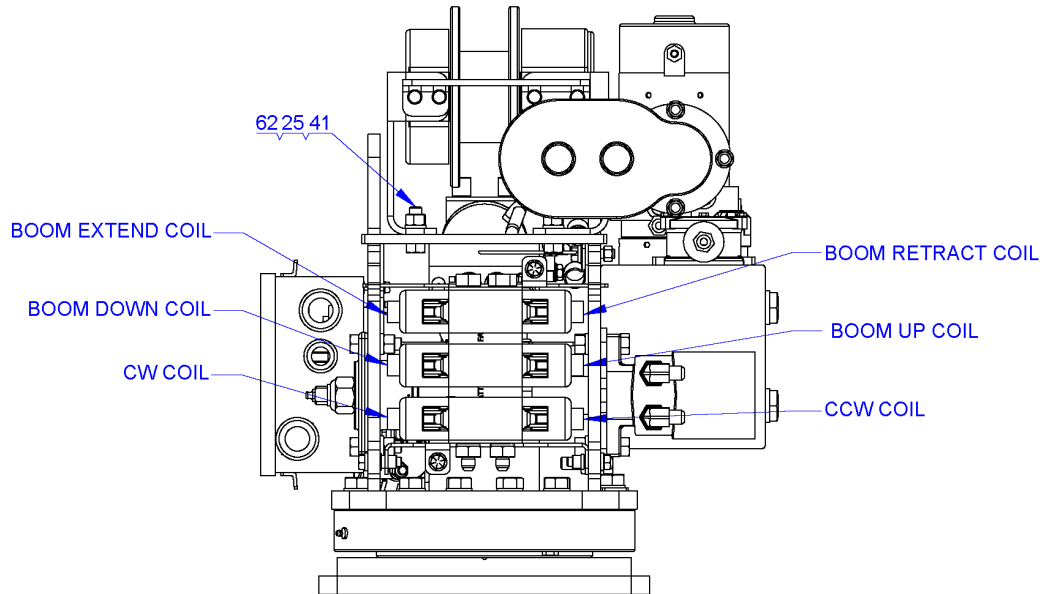
# 3203EH GENERAL ASSEMBLY

P/N 320989015

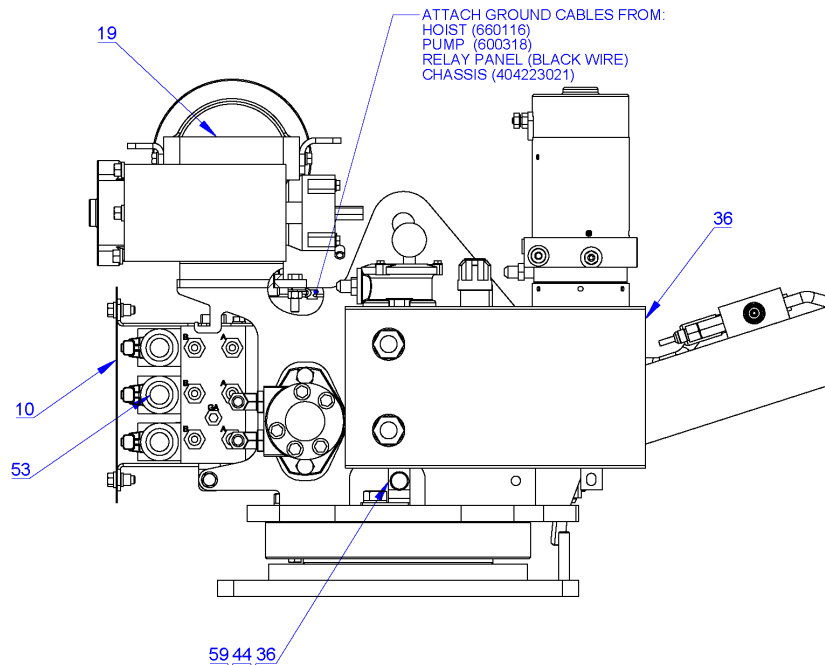
BOM REVS	ITEM NO.	QTY	PART NUMBER	DESCRIPTION
	1	1	320989240	PEDESTAL ASSEMBLY, 3203 PRX,REMOTE PENDANT W/HORN
	2	1	320988030	SHIP KIT, 3203 PR/PRX, HW, REMOTE PENDANT W/HORN
	3	1	320988102	BOOM ASSY 3203 PRX
	4	1	320338002	CABLE ASS'Y, 7/32" x 62FT, THIMBLE END
	5	1	320988004	DECAL LAYOUT, 3203
	6	1	320824000	PIN, LIFT CYLINDER
	7	1	404220000	PIN WDMT BOOM/PED
	8	2	360678000	PIN, 3/16 COTTERLESS RING
	9	1	033037200	NUT HX 3/8-16UNC
	10	1	009109000	SCREW HX HD 3/8-16UNC X 1 1/2 LG
	11	1	003303710	SCREW HX HD 3/8-16UNC X 1 LG GR8
	12	2	021200000	WASHER FL 3/8
	13	2	021100000	WASHER SP LK 3/8
	14	1	239300000	ZERK, GREASE
	15	1	366719115	DISC, HORN, ELECTRIC. VOLTAGE 12

# 3203 PRX HW PEDESTAL ASSEMBLY

## P/N 320989240

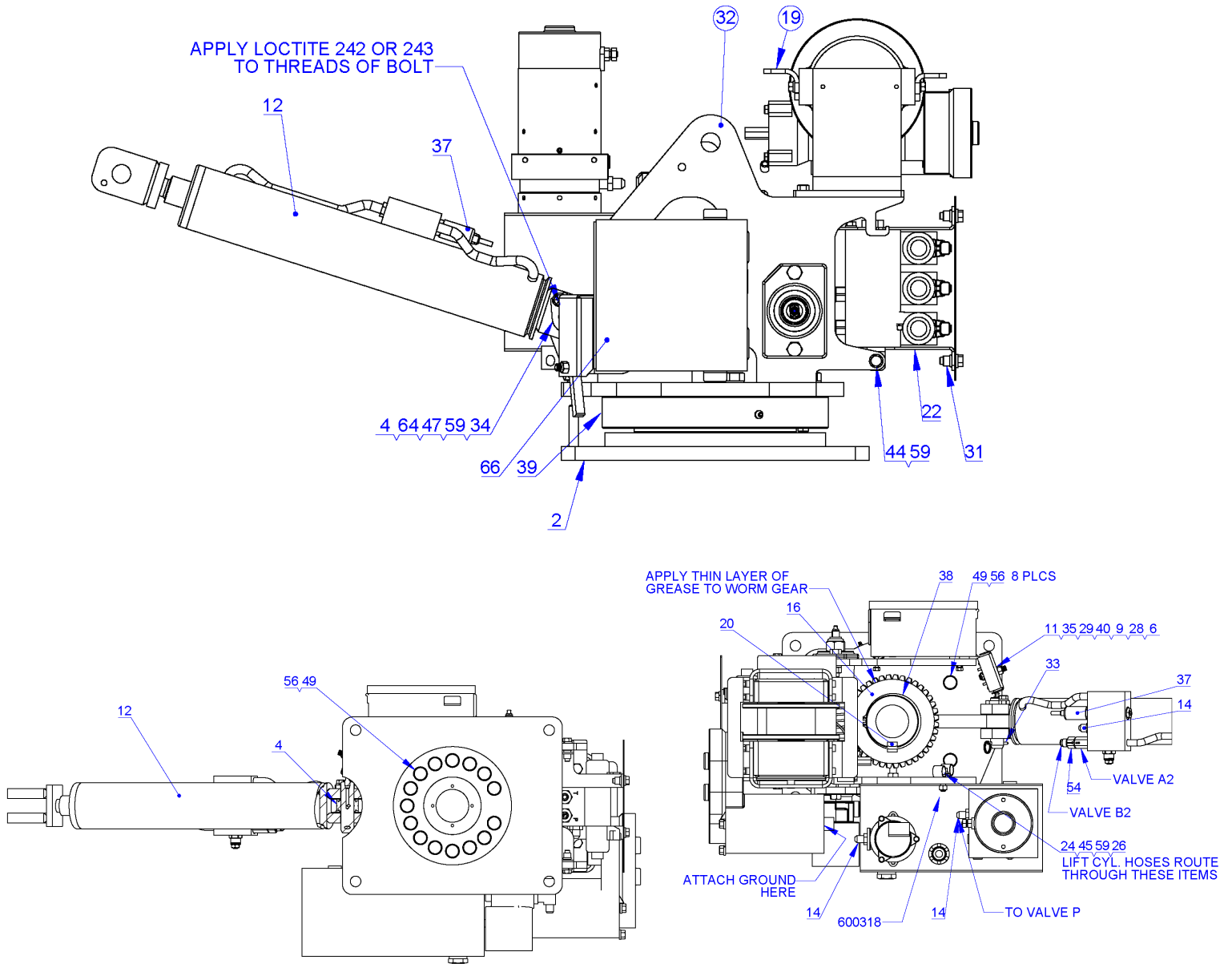


COVER PANEL OMITTED  
TO SHOW VAVLE ASSY.



# 3203PRX HW PEDESTAL ASSEMBLY

P/N 320989240





# 3203PRX HW PEDESTAL ASSEMBLY

**P/N 320989240**

NOTE	BOM REVS	ITEM NO.	QTY	PART NUMBER	DESCRIPTION
		1	1	366671000	ARM, ROTATION STOP
		2	1	404193100	BASE WMT, 3203 PR/PRX, W/ ROT. STOP
		3	1	460079000	BEARING, ROTATION STOP
		4	1	320858000	BEARING, SPHERICAL 1.00 ID
		5	1	320989235	BRACKET, POWER UNIT
		6	1	320989216	BRACKET, SWITCH MNT, ROT STOP, 3203 PR/PRX
3		7	1	600318000	CABLE ASSY, 6 AWG, 11" WIRE LGTH, ø3/8 TMNL, ø5/16 TMNL
3		8	1	660116000	CABLE ASSY, 6 AWG, 16 1/4" WIRE LGTH, ø3/8 TMNL, ø5/16 TMNL
		9	4	6210000	CAPSCREW-#8-32 X 7/8 LG SOC HD Z/P
		10	1	366688000	COVER, REAR
		11	1	320989217	COVER, ROTATION STOP, 3203 PR/PRX
		12	1	320845000	CYLINDER, LIFT
3		13	2	490198000	FITTING 10SAE(M)/6JIC ELBOW 90
3		14	3	200876000	FITTING 6 SAE/6 JIC STRAIGHT
		15	1	320989233	GEAR COVER, 3203 PR/PRX, HW
		16	1	320988253	GEAR, WORM, 4.00 ID, .75 KEY, 3203
		17	2	750734000	GROMMET, 0.38ID x 0.69OD x 0.14THK
		18	1	750169000	GROMMET, RUBBER
		19	1	110703000	WINCH-DCG8R FOR AUTOCRANE #3203 PRX
		20	1	340602000	KEY, 3/4 SQ X 1
		21	1	320988251	KIT, HYDRAULIC, 3203 PRX
		22	1	320989203	LOWER VALVE BRACKET, 3203H
		23	1	404241285	MOTOR, HYD 8.0 CU IN, SAE 2-BOLT 1" SHAFT
		24	2	480024000	MOUNT PENDANT CABLE RETAINER
		25	9	17701000	NUT HX 1/2-13UNC

NOTE:

1. TORQUE TO 180 LB-FT(DRY)
2. TORQUE TO 55 LB-FT(DRY)
3. REF ITEMS ARE PURCHASED IN A KIT

# 3203PRX HW PEDESTAL ASSEMBLY

P/N 320989240

ITEM NO.	QTY	PART NUMBER	DESCRIPTION
26	2	17300000	NUT HX 3/8 NC
27	2	330372000	NUT HX 3/8-16UNC
28	4	725321000	NUT HX NYLK #8-32UNC
29	2	017301000	NUT HX NYLK 3/8-16UNC CP
30	1	019000000	NUT HX NYLK 7/8-14UNF
31	4	736274000	NUTSERT 3/8-16UNC X .027-.15 GRIP
32	1	320988210	PEDESTAL WELDMENT, 3203 PR / PRX / H
33	1	360678000	PIN, 3/16 COTTERLESS RING
34	1	320824000	PIN, LIFT CYLINDER
35	1	366673000	PIN, ROTATION STOP
36	1	320991279	POWER UNIT, ENTRY LEVEL 3203/4004 EH
37	1	320917000	PRESSURE SWITCH, N.C. 1,900 PSI
38	1	404028000	RETAINING RING, SNAP RING
39	1	320878000	ROTATION BEARING
40	1	320989214	ROTATION STOP SWITCH ASSEMBLY, 11"
41	4	001020100	SCREW HX HD 1/2-13UNC x 1 1/2 LG
42	5	001160300	SCREW HX HD 1/2-13UNC X 1 3/4 LG
43	3	006200000	SCREW HX HD 1/4-20UNC X 1 1/4 LG
44	2	009109000	SCREW HX HD 3/8-16UNC X 1 1/2 LG
45	1	003303940	SCREW HX HD 3/8-16UNC X 1 1/2 LG
46	1	404198000	SCREW HX HD 3/8-16UNC X 1 1/2 LG, BRONZE
47	3	003303710	SCREW HX HD 3/8-16UNC X 1 LG GR8
48	4	003302520	SCREW HX HD 5/16-18UNC X 3/4 LG GR5
49	23	001219800	SCREW HX HD 5/8-11UNC X 1 3/4 LG GR8

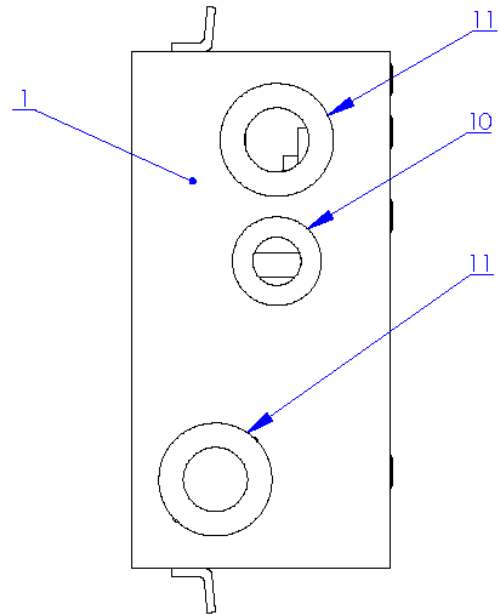
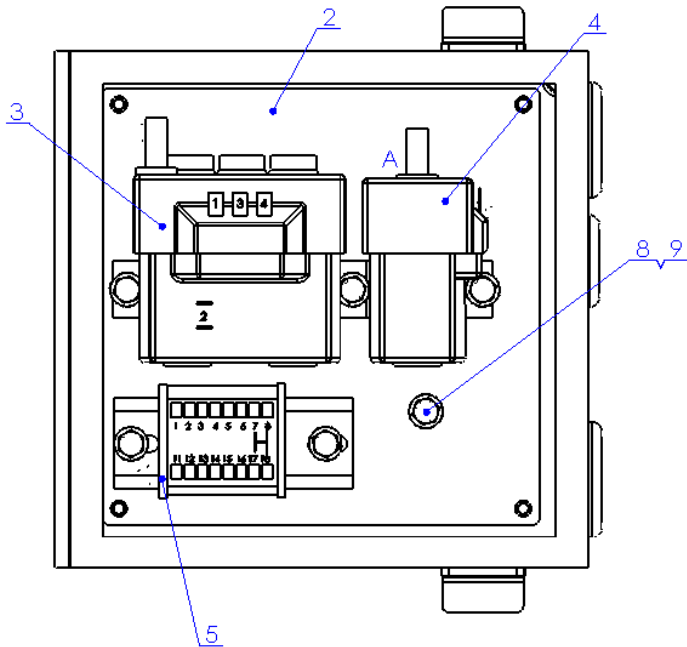
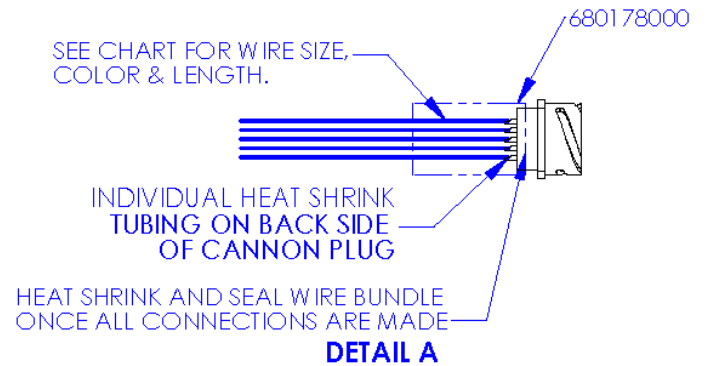
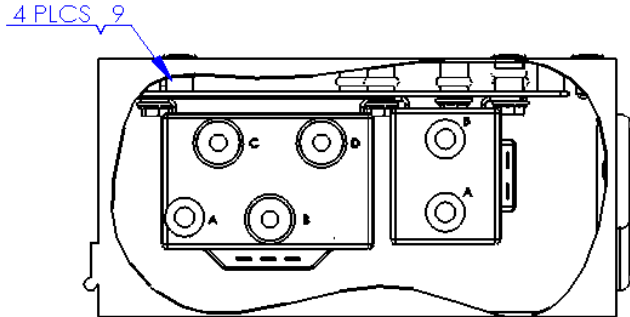
# 3203PRX HW PEDESTAL ASSEMBLY

P/N 320989240

ITEM NO.	QTY	PART NUMBER	DESCRIPTION
51	1	320879000	SPACER ROTATION
52	1	320989204	UPPER VALVE BRACKET, 3203H
53	1	320989420	VALVE ASSY, 3 SPOOL, NON-PROP., 12 VOLT
54	1	320988261	VALVE, FLOW REGULATOR, IN-LINE
55	1	021200000	WASHER FL 3/8
56	23	023902000	WASHER FL 5/8 HARDENED
57	4	019700000	WASHER SP LK #8
58	3	020200000	WASHER SP LK 1/4
59	6	021100000	WASHER SP LK 3/8
60	4	020601000	WASHER SP LK 5/16
61	1	366675000	WASHER, NYLON
62	10	021500000	WASHER, SP LK 1/2
63	1	404015000	WORM SHAFT
64	2	239300000	ZERK, GREASE
65	1	330478000	BEARING HOUSING ASSY
66	1	320988310	RELAY PANEL ASSEMBLY, 3203, REMOTE PENDANT W/HORN
67	1	680156210	KIT-ELECTRICAL, 3203 PR/PRX, REMOTE PENDANT W/ HORN

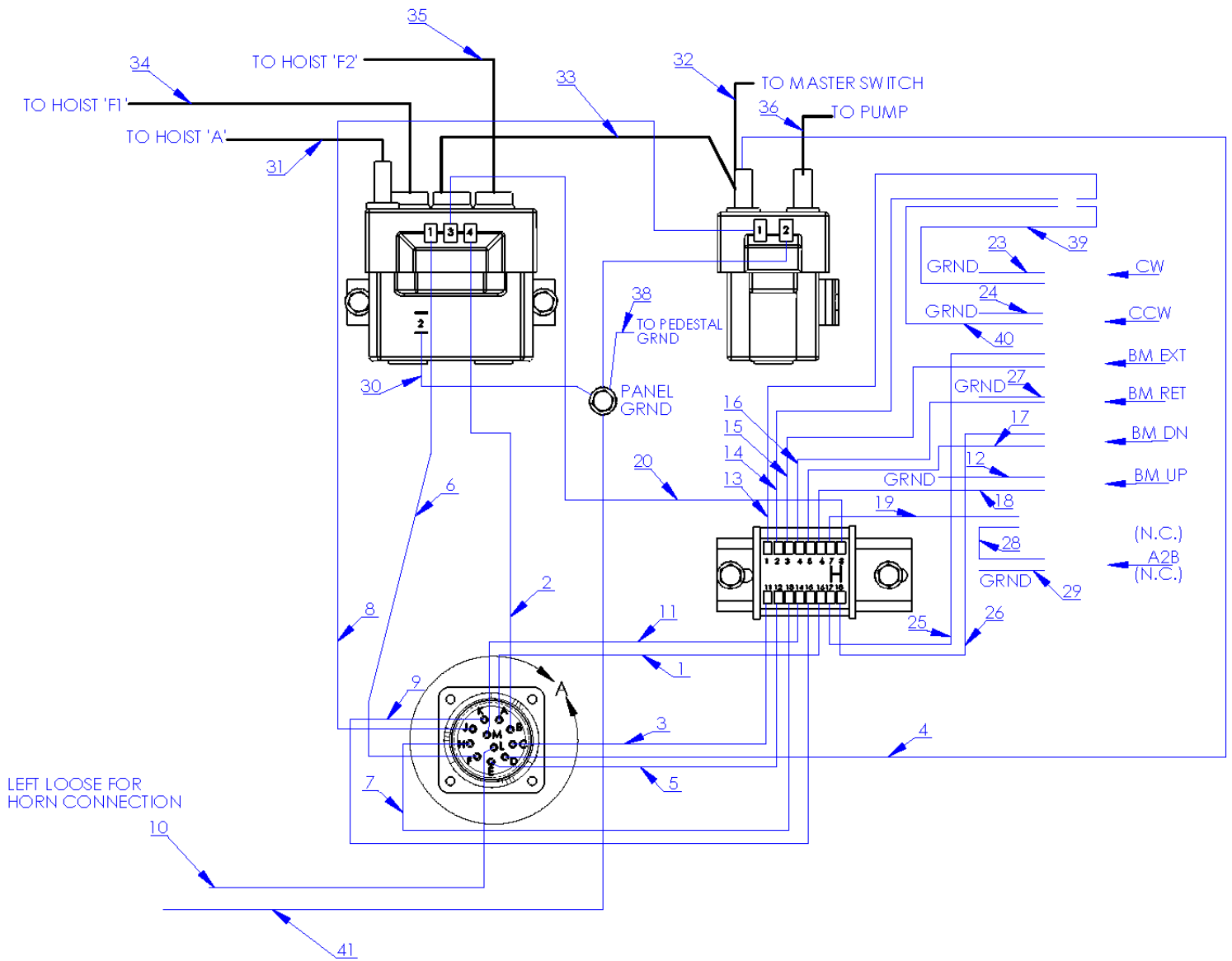
# 3203 RELAY PANEL ASSEMBLY

P/N 320988310



# 3203 RELAY PANEL ASSEMBLY

P/N 320988310



# 3203 RELAY PANEL ASSEMBLY

## P/N 320988310

PART NO.	NO.	FROM	FROM END	COLOR	GAGE	LENGTH	TO END	TO	TO LABEL	REVISION
N/A	1	CANNON PLUG - A	SOLDER	YELLOW	16	45	TIN	TERMINAL BLOCK - 16		
N/A	2	CANNON PLUG - B	SOLDER	GREEN	16	50	FEMALE SPADE	HOIST RELAY-4	HOIST UP	
N/A	3	CANNON PLUG - C	SOLDER	ORANGE	16	45	TIN	TERMINAL BLOCK - 11		
N/A	4	CANNON PLUG - D	SOLDER	RED	16	50	#6-8 RING TERMINAL	PUMP RELAY - A		
N/A	5	CANNON PLUG - E	SOLDER	WHITE/RED	16	45	TIN	TERMINAL BLOCK - 12		
N/A	6	CANNON PLUG - F	SOLDER	RED/BLACK	16	50	FEMALE SPADE	HOIST RELAY - 1	HOIST DN	
N/A	7	CANNON PLUG - H	SOLDER	GREEN/BLACK	16	45	TIN	TERMINAL BLOCK - 13		
N/A	8	CANNON PLUG - J	SOLDER	WHITE/BLACK	16	50	FEMALE SPADE	PUMP RELAY - 1		
N/A	9	CANNON PLUG - K	SOLDER	BLUE	16	45	TIN	TERMINAL BLOCK - 15		
N/A	10	CANNON PLUG - L	SOLDER	BLACK	16	30	TIN	LOOSE	HORN (+)	
N/A	11	CANNON PLUG - M	SOLDER	ORANGE/BLACK	16	45	TIN	TERMINAL BLOCK - 14		
N/A	12	GROUND TO RELAY PANEL	1/4" RING TERMINAL	WHITE	16	30.5	DEUTSCH CONTACT - 0462-201-16141	DEUTSCH DT06-2S, PIN 2, VALVE BOOM UP COIL		
N/A	13	TERMINAL BLOCK - 1	TIN	ORANGE	16	30.5	DEUTSCH CONTACT - 0460-202-16141	DEUTSCH DT04-4P, PIN - 1, ROTATION STOP SWITCH, CW	ROT CW	
N/A	14	TERMINAL BLOCK - 2	TIN	WHITE/RED	16	30.5	DEUTSCH CONTACT - 0460-202-16141	DEUTSCH DT04-4P, PIN - 4, ROTATION STOP SWITCH, CCW	ROT CCW	
N/A	15	TERMINAL BLOCK - 3	TIN	GREEN/BLACK	16	30.5	DEUTSCH CONTACT - 0462-201-16141	DEUTSCH DT06-2S, PIN - 1, VALVE EXTEND COIL	EXTEND	
N/A	16	TERMINAL BLOCK - 4	TIN	ORANGE/BLACK	16	30.5	DEUTSCH CONTACT - 0462-201-16141	DEUTSCH DT06-2S, PIN - 1, VALVE RETRACT COIL	RETRACT	
N/A	17	TERMINAL BLOCK - 5	TIN	BLUE	16	30.5	DEUTSCH CONTACT - 0462-201-16141	DEUTSCH DT06-2S, PIN - 1, VALVE BOOM DOWN COIL	BOOM DN	
N/A	18	TERMINAL BLOCK - 6	TIN	YELLOW	16	30.5	DEUTSCH CONTACT - 0462-201-16141	DEUTSCH DT06-2S, PIN - 1, VALVE BOOM UP COIL	BOOM UP	
N/A	19	TERMINAL BLOCK - 7	TIN	RED	16	30.5	DEUTSCH CONTACT - 0460-202-16141	DEUTSCH DT04-2P, PIN - 1, PRESSURE SWTCH	PRESS SW	
N/A	20	TERMINAL BLOCK - 8	TIN	GREEN/WHITE	16	6	FEMALE SPADE	HOIST RELAY - '3'		
N/A	23	DEUTSCH DT06-2S, PIN - 2, VALVE ROTATE CW COIL	DEUTSCH CONTACT - 0462-201-16141	WHITE	16	26	1/4" RING TERMINAL	GROUND TO RELAY PANEL		
N/A	24	DEUTSCH DT06-2S, PIN - 2, VALVE ROTATE CCW COIL	DEUTSCH CONTACT - 0462-201-16142	WHITE	16	26	1/4" RING TERMINAL	GROUND TO RELAY PANEL		
N/A	25	DEUTSCH DT06-2S, PIN - 2, VALVE EXTEND COIL	DEUTSCH CONTACT - 0462-201-16141	RED/WHITE	16	30.5	TIN	TERMINAL BLOCK -17		
N/A	26	DEUTSCH DT06-2S, PIN - 2, VALVE BOOM DOWN COIL	DEUTSCH CONTACT - 0462-201-16141	BLUE/WHITE	16	30.5	TIN	TERMINAL BLOCK -18		
N/A	27	DEUTSCH DT06-2S, PIN - 2, VALVE RETRACT COIL	DEUTSCH CONTACT - 0462-201-16141	WHITE	16	26	1/4" RING TERMINAL	GROUND TO RELAY PANEL		
N/A	28	DEUTSCH DT04-2P, PIN - 2, PRESSURE SWITCH	DEUTSCH CONTACT - 0460-202-16141	WHITE/RED	16	14	DEUTSCH CONTACT - 0460-202-16141	DEUTSCH DT06-2S, PIN - 2, A2B SWTCH	PRESS SW/ A2B	
N/A	29	DEUTSCH DT06-2S, PIN - 1, A2B SWITCH	DEUTSCH CONTACT - 0462-201-16141	WHITE	16	26	1/4" RING TERMINAL	GROUND TO RELAY PANEL		

# 3203 RELAY PANEL ASSEMBLY

P/N 320988310

P/N	NO.	FROM	FROM END	COLOR	GAGE	LENGTH	TO END	TO	LABEL	REV.
N/A	30	HOIST RELAY - '2'	FEMALE SPADE	WHITE	16	5	1/4" RING TERMINAL	GROUND TO RELAY PANEL		
320988331	31	HOIST RELAY - 'A'	5/16" RING TERMINAL	BLACK	6	35	5/16" RING TERMINAL w/ BOOT	HOIST MOTOR - A (INSTALLATION)	A	
N/A	32	HOIST RELAY - 'B'	5/16" RING TERMINAL	BLACK	6	34	STRIP	TWECO (INSTALLATION)		
320988333	33	HOIST RELAY - 'B'	5/16" RING TERMINAL	BLACK	6	2	5/16" RING TERMINAL	PUMP RELAY - A		
320988334	34	HOIST RELAY - 'C'	5/16" RING TERMINAL	BLACK	6	36	5/16" RING TERMINAL w/ BOOT	HOIST MOTOR - F1(INSTALLATION)	F1	
320988335	35	HOIST RELAY - 'D'	5/16" RING TERMINAL	BLACK	6	34	5/16" RING TERMINAL w/ BOOT	HOIST MOTOR - F2 (INSTALLATION)	F2	
320988336	36	PUMP RELAY - 'B'	5/16" RING TERMINAL	BLACK	6	35	5/16" RING TERMINAL w/ BOOT	PUMP MOTOR (INSTALLATION)	PUMP	
N/A	37	PUMP RELAY - 2	FEMALE SPADE	WHITE	16	4	1/4" RING TERMINAL	GROUND TO RELAY PANEL		
320988338	38	GROUND TO RELAY PANEL	1/4" RING TERMINAL	BLACK	16	23	3/8" RING TERMINAL	GND STUD (INSTALLATION)		
N/A	39	ROT STOP CW	DEUTCH CONTACT, DT04-4P	ORANGE	16	20	DEUTSCH CONTACT - 0462-201-16141	DEUTSCH DT06-2S, PIN-1, VALVE ROTATION CW COIL	ROT CW	
N/A	40	ROT STOP CCW	DEUTCH CONTACT, DT04-4P	WHITE / RED	16	20	DEUTSCH CONTACT - 0462-201-16142	DEUTSCH DT06-2S, PIN-1, VALVE ROTATION CW COIL	ROT CCW	
NA	41	GROUND TO RELAY PANEL	1/4" RING TERMINAL	BLACK	16	30	TIN	LOOSE	HORN (-)	

