



4004 EH OWNERS MANUAL

Manual No. 999980

Rev. 5/19/04

Serial No. _____

Mailing Address:

P.O. Box 580697

Tulsa, OK 74158-0697

Physical Address:

4707 N. Mingo Rd.

Tulsa, OK 74117-5904

Phone (918) 836-0463

Fax (918) 834-5979

<http://www.autocrane.com>



Auto Crane Warranty Registration

Fax Transmission

To: Warranty Department Fax: (918) 834-5979
From: _____ Date: _____
Re: Product Registration Pages: _____

End User Information: (Required for Warranty Activation)

Name: _____ Phone: _____
Address: _____
City: _____ State: _____ Zip: _____
Contact: _____ E-mail Address: _____

Distributor Information: (Required for Warranty Activation)

Name: _____
Address: _____
City: _____ State: _____ Zip: _____
Contact: _____ E-mail Address: _____

Product Information: (Required for Warranty Activation)

Model No.: _____ Serial No.: _____
Date Product Delivered: _____ Date Processed:* _____
VIN # _____ * For Auto Crane use only

ONE REGISTRATION FORM PER UNIT (CRANE OR BODY)

Registration form must be mailed or faxed within 15 days of customer installation.

Mail to:
Warranty Department
Auto Crane Company
P.O. Box 581510
Tulsa, OK 74158-0697

4004EH SERIES

OWNER'S MANUAL – REVISION RECORD

Revision Date	Section(s) Or Page(s)	Description of Change
09/02/03	Last page	New 2-year warranty policy to replace 1-year warranty policy
05/19/04	Sect. 3, 4, 5, 6, 7, 8 & 9	General configuration updates to Sect 3 thru 9

WARNINGS

WARNING! Federal law (49 cfr part 571) requires that the Final Stage Manufacturer of a vehicle certify that the vehicle complies with all applicable federal regulations. Any modifications performed on the vehicle prior to the final state are also considered intermediate stage manufacturing and must be certified as to compliance. The installer of this crane and body is considered one of the manufacturers of the vehicle. As such a manufacturer, the installer is responsible for compliance with all applicable federal and state regulations, and is required to certify that the vehicle is in compliance.

WARNING! It is the further responsibility of the installer to comply with the OSHA Truck Crane Stability Requirements as specified by 29 CFR part 1910.180 (C) (1).

WARNING! NEVER OPERATE THE CRANE NEAR ELECTRICAL POWER LINES!

Death or serious injury will result from boom, line, or load contacting electric lines. Do not use crane within 10 feet (3.05m) of electric power lines carrying up to 50,000 volts. One foot additional clearance is required for every additional 30,000 volts or less. **SEE DANGER DECAL (P/N 040529)** in this Owner's Manual.

WARNING! NEVER.....

- ◆ **EXCEED** load chart capacities (centerline of rotation to hoist hook).
- ◆ Un-reel last 5 wraps of cable from drum!
- ◆ Wrap cable around load!
- ◆ Attempt to lift or drag a load from the side! The boom can fail far below its rated capacity.
- ◆ Weld, modify, or use unauthorized components on any Auto Crane unit! This will void any warranty or liability. Also failure of the crane may result.
- ◆ Place a chain link on the tip of the hook and try to lift a load!
- ◆ Use a sling bar or anything larger than the hook throat that could prevent the hook latch from closing, thus negating the safety feature!
- ◆ Hold on any pendant Select Switch that will cause unsafe operating conditions!

WARNING! In using a hook with latch, **ALWAYS** make sure that the hook throat is closed before lifting a load! Proper attention and common sense applied to the use of the hoist hook and various slings will prevent possible damage to material being hoisted and may prevent injury to personnel.

WARNING! Failure to correctly plumb and wire crane can cause inadvertent operation and damage to crane and/or personnel!

WARNING! Auto Crane Company remote controlled cranes are not designed or intended to be used for any applications involving the lifting or moving of personnel.

WARNING! ALWAYS operate the crane in compliance with the load capacity chart. **DO NOT USE** the overload shutdown device to determine maximum rated loads, if the crane is equipped with this type of device.

READ THIS PAGE

TABLE OF CONTENTS

4004EH SERIES

INTRODUCTION	1 - 1
SAFETY TIPS & PRECAUTIONS	2 - 1
OPERATING PRACTICES & WARNINGS	2 - 3
OPERATION OF UNIT & OUTRIGGERS	2 - 4
QUALIFICATIONS FOR OPERATORS	2 - 5
INSPECTION / TESTING & MAINTENANCE	2 - 8
MAINTENANCE OF BATTERIES	2 - 13
SAFETY DECAL SECTION	3 - 1
GENERAL SPECIFICATIONS	3 - 6
GENERAL DIMENSIONS	3 - 7
INSTALLATION INSTRUCTIONS	3 - 8
LUBRICATION & MAINTENANCE	3 - 9
GENERAL ASSEMBLY	4 - 1
UNIT LESS BOOM	5 - 1
PEDESTAL ASSEMBLY	5 - 5
BOOM ASSEMBLY (8 - 12 - 16)	6 - 1
2 - BLOCK ASSEMBLY	6 - 3
HYDRAULIC TURNER ASSEMBLY	7 - 1
HOIST ACTUATOR ASSEMBLY	7 - 2
TRAVELING BLOCK ASSEMBLY	7 - 6
ELECTRICAL ASSEMBLY	8 - 1
ELECTRICAL PANEL ASSEMBLY	8 - 2
PENDANT ASSEMBLY	8 - 4
HYDRAULIC PUMP & RESERVOIR	9 - 1
HYDRAULICS	9 - 2
HYDRAULIC ASSEMBLY	9 - 4
LOAD CHART 8 - 12 - 16 BOOM	10 - 1
WARRANTY	LAST PAGE

INTRODUCTION

4004EH SERIES

Auto Crane products are designed to provide many years of safe, trouble-free, dependable service when properly used and maintained.

To assist you in obtaining the best service from your crane and to avoid untimely crane and/or vehicle failure, this manual provides the following operating and service instructions. It is **specifically recommended** that all operating and service personnel consider this manual as mandatory material for reading and study before operating or servicing Auto crane products. It is **highly recommended** that crane owners, equipment managers and supervisors also read this manual.

Auto Crane has incorporated several safety features in the 4004EH series cranes for your protection. The choice of materials and the design of the electrical system minimizes weight and lengthens durability. The hydraulic components meet or exceed a **3.5:1 safety factor**. Holding valves prevent the load from dropping if a hose should fail. The reservoir has a **40μ air filter** in the filler cap. The pump has a **100 mesh strainer** in the suction line.

For your convenience the overall dimensions of the 4004EH series crane are in the General Dimension Section. Maximum turning radius at both the hoist motor and the rotation motor are also on that drawing.

Remember, the crane adds weight to the vehicle. Adding weight may change the driving and riding characteristics of the vehicle unless the appropriate overload spring(s) are installed on the truck. The payload of the vehicle is reduced by the weight of the crane. The operator should exercise care when loading the vehicle. Distributing the payload on the vehicle evenly will greatly improve the driving and riding characteristics of the vehicle. **A minimum G.V.W. of 10,500 lbs. is recommended for mounting the 4004EH series cranes.**

The 4004EH series cranes are attached directly to your 12 volt truck electrical system. The power cable and retaining clips are included with the crane. A typical power cable mounting and hookup is shown in the installation section. The performance of your new crane depends on the truck electrical system. The use of maintenance free batteries is **NOT** recommended for use with any Auto Crane product. The recommended alternator and battery that will give the longest life with the most useful duty cycle is a 60 amp. alternator with a 120 minute reserve capacity, deep cycle battery. These specifications should be considered minimum.

Auto Crane Company issues a limited warranty certificate with each unit sold. See last page for warranty policy.

It has always been Auto Crane Company policy to handle all warranty claims we receive as promptly as possible. If a warranty claim involves discrepant material or workmanship, Auto Crane will take immediate corrective action. It is understandable that Auto Crane company cannot assume responsibility of liability when it is obvious that our products have been abused, mis-used, overloaded or otherwise damaged by inexperienced persons trying to operate the equipment without reading the manual.

Auto Crane will not assume responsibility or liability for any modifications or changes made to unit, or installation of component parts done without authorization.

Auto Crane maintains a strong distributor network and a knowledgeable Customer Service Department. In most cases, an equipment problem is solved via phone conversation with our customer service department. The customer service department also has the ability to bring a local distributor, a regional sales manager, or a factory serviceman into the solution of an equipment problem. If, through no fault of Auto crane company, it is necessary to send an experienced factory serviceman on a field service call, the rates stated in the Auto Crane Distributor's Flat Rate Manual will apply.

Auto Crane Company's extensive Research and Development Program allow our customers to use the best equipment on the market. Our Engineering Staff and our knowledgeable sales people, are always available to our customers in solving crane and winch-type application problems. When in doubt, call the Auto Crane factory.

DISTRIBUTOR ASSISTANCE:

Should you require any assistance not given in this manual, we recommend that you consult your nearest Auto Crane Distributor. Our distributors sell authorized parts and have service departments that can solve almost any needed repair.

NOTE: THIS MANUAL SHOULD REMAIN WITH THE CRANE AT ALL TIMES.

This manual does not cover all maintenance, operating, or repair instructions pertinent to all possible situations. If you require additional information, please contact the **Auto Crane Company** at the following telephone number: **(918) 836-0463**. The information contained in the manual is in effect at the time of this printing. Auto Crane Company reserves the right to update this material without notice or obligation.

--- IMPORTANT ---

SAFETY TIPS AND PRECAUTIONS

1. No unqualified or unauthorized person shall be allowed to operate the crane.
2. **WARNING:** Never weld, modify, or use unauthorized components / parts on any Auto Crane unit. This will void any warranty or liability. Also, failure of the crane may result.
3. Make certain the vehicle meets minimum chassis requirements. (These requirements do not guarantee unit stability.)
4. Make certain the crane is installed per factory specifications. Contact your local distributor or the Auto Crane factory if any questions arise.
5. Visual inspections and tests should be conducted at the beginning of each shift each day to ensure that the crane and all its operating systems are in good condition and working order before it is used.
6. Inspect hydraulic hoses frequently for signs of deterioration, and replace them as required.
7. If a hydraulic break occurs, leave the area of the break and do not attempt to stop the break by hand as the hydraulic oil may be hot and under high pressure which can cause serious injury. Shut the system down as soon as possible.
8. Check the hook at least every thirty days for distortions or cracks and replace it as required.
9. Oil gears as required.
10. Stop all operations when cleaning, adjusting or lubricating the machine.
11. Keep dirt and grit out of moving parts by keeping a crane clean. Make sure machine is free of excess oil, grease, mud and rubbish, thus reducing accidents and fire hazards.
12. When a new cable is installed, operate first with a light load to let the cable adjust itself.
13. Locate the vehicle at the work site for the best stability possible.
14. Keep the vehicle in a level position while loading or unloading.
15. Observe operating area for obstructions and/or power lines that might be a hazard
16. **WARNING: NEVER OPERATE THE CRANE NEAR ELECTRICAL POWER LINES.** Auto Crane Company recommends that the crane never be any closer to a power line (including telephone lines) than 10 feet at any point.
17. Allow the vehicle engine to warm up before operating crane.
18. Know the weight of your rigging and load to avoid overloading the crane.
19. Deduct the weight of the load handling equipment from the load rating to determine how much weight can be lifted.
20. All load ratings are based on crane capacity, NOT the vehicle stability. Remember in lifting a heavy load, the weight can create enough tipping moment to overturn the vehicle
21. Always comply with load chart capacities, (centerline of rotation to hook).
22. Secure all loads before lifting.
23. Always set the emergency brake before beginning operation.
24. Keep objects and personnel clear of crane path during operation.
25. Operate control levers slowly and smoothly in order to meter oil flow for safe operation.
26. Always use outriggers from vehicle to the ground during crane operation. Ensure that they are firmly positioned on solid footings. Stand clear of outriggers while they are being extended.
27. If any outrigger, when extended, rests on a curb or other object that prevents it from extending to its maximum distance, shorten bearing or fulcrum point and reduce the maximum load accordingly.
28. When an outrigger will not reach the ground due to holes or grades, it shall be blocked up to provide level and firm support for the truck.
29. When working in soft earth, use wide pads under outrigger feet to prevent sinking.
30. Always store outriggers before transportation.

WARNING!

Auto Crane Company cranes are not designed or intended for use in lifting or moving persons. Any such use shall be considered to be improper and the seller shall not be responsible for any claims arising there from. This sale is made with the express understanding that there is no warranty that the goods shall be fit for the purpose of lifting or moving persons or other improper use and there is no implied warranty or responsibility for such purposes.

--- IMPORTANT ---

SAFETY TIPS AND PRECAUTIONS

31. Always store the crane in its stowed position for transportation.
32. Remember the overall height of the entire unit for garage door clearance or when moving under objects with low overhead clearance
33. Disengage power takeoff (PTO) before moving the vehicle.
34. Always walk around the vehicle before moving.
35. Never drive with a load suspended from crane.
36. Do not take your eyes off a moving load. Look in the direction you are moving.
37. Never swing a load over people.
38. Do not stop the load sharply in midair so that it swings like a pendulum. Meter the control levers to avoid this situation.
39. Crane boom length should be kept as short as possible for maximum lifting capacity and greater safety. Longer booms require additional care in accelerating and decelerating the swing motion, and thus slow down the working cycle and reduce productivity.
40. Keep the load directly and vertically under the boom point at all times. Crane booms are designed primarily to handle vertical loads, not side lifts.

WARNING: Never attempt to lift, drag, tow or pull a load from the side. The boom can fail far below its rated capacity.
41. Do not push down on anything with boom extensions, lift or outer boom function.
42. Do not lift personnel with any wire rope attachment or hook. There is no implied warranty or responsibility for such purposes.
43. WARNING: In using a safety hook, ALWAYS close the hook throat before lifting a load. Proper attention and common sense applied to the use of the hook and various slings will prevent possible damage to material being hoisted and may prevent injury to personnel.
44. WARNING: Never place a chain link on the tip of the hook and try to lift a load with the hoist.
45. WARNING: Never use a sling bar or anything larger than the hook throat which could prevent the safety latch from closing, thus negating the safety feature.
46. If the crane is equipped with an optional winch:
 - do NOT allow personnel to ride on loadline, hook, load, or any other device attached to winch line.
 - do NOT extend boom without reeling off line at the same time when using winch.
 - do pull load-block up against the boom tip.
47. Do not wrap the wire rope around sharp objects when using winch.
48. WARNING: Never unreel last 5 wraps of cable from drum.

--- IMPORTANT ---

OPERATING PRACTICES & WARNINGS

1. Make certain the vehicle meets minimum chassis requirements. (These requirements do not guarantee unit stability)
2. Make certain the crane is installed per factory specifications. Contact your local Distributor or the Auto Crane factory if any questions arise.
3. Keep the vehicle in as level a position as possible while loading or unloading.
4. **ALWAYS** set the vehicle emergency brake before beginning crane operations.
5. **ALWAYS** use outriggers from vehicle to the ground during crane operation. Make sure they are firmly positioned on solid footings.
6. All load ratings are based on crane capacity, **NOT** truck/crane stability.
7. Keep objects and personnel clear of crane path during operation.
8. Keep hoist cable pulled tight at all times.
9. **REMEMBER**, in lifting a heavy load, the weight can create enough tipping momentum to overturn the vehicle.
10. **ALWAYS** keep load as close to ground as possible.
11. Oil gears as required.
12. Periodic adjustment of hoist worm brake may be required (see automatic safety brake drawing in this manual).
13. Hydraulic hoses need to be inspected frequently for signs of deterioration, and be replaced as required.
14. The hoist hook is an important item that an operator should consider and use properly. It should be checked on a daily basis for distortion or cracks.
15. **ALWAYS** store outriggers before road travel.
16. **WARNING! NEVER OPERATE THE CRANE NEAR ELECTRICAL POWER LINES! Death or serious injury will result from boom, line, or load contacting electric lines. Do not use crane within 10 feet (3.05m) of electric power lines carrying up to 50,000 volts. One foot additional clearance is required for every additional 30,000 volts or less.**
17. **WARNING! NEVER EXCEED** load chart capacities (centerline of rotation to hoist hook).
18. **WARNING! NEVER** un-reel last 5 wraps of cable from drum!
19. **WARNING! NEVER** wrap cable around load!
20. **WARNING! NEVER** attempt to lift or drag a load from the side! The boom can fail far below its rated capacity.
21. **WARNING! NEVER** weld, modify, or use unauthorized components on any Auto Crane unit! This will void any warranty or liability. Also failure of the crane may result.
22. **WARNING! NEVER** place a chain link on the tip of the hook and try to lift a load!
23. **WARNING! NEVER** use a sling bar or anything larger than the hook throat that could prevent the hook latch from closing, thus negating the safety feature!
24. **WARNING! In using a hook with latch, ALWAYS** insure that the hook throat is closed before lifting a load! Proper attention and common sense applied to the use of the hoist hook and various slings will prevent possible damage to material being hoisted and may prevent injury to personnel.
25. **WARNING! NEVER** hold any pendant Select Switch on that will cause unsafe operating conditions!

WARNING!

Auto Crane Company remote controlled, stiff boom cranes are not designed or intended to be used for any applications involving the lifting or moving of personnel.

--- IMPORTANT ---

OPERATION OF UNIT

1. Make sure this manual has been thoroughly read by all crane operating personnel and supervisors.
2. A routine inspection of the crane should be mandatory before each operating day. Any defects should be corrected immediately.
3. At a job site the vehicle should be positioned so that the crane can adequately reach the load within the rated capacity (centerline of rotation to hoist hook).
4. Keep the vehicle as level as possible during operation.
5. For electric cranes, **engage emergency brake** and leave ignition on with transmission in neutral (or in park for automatic transmissions). Activate any crane power switches. For Auto Crane units requiring battery and hydraulic operation, **engage emergency brake**, place gear selector in neutral, press clutch, activate PTO, release clutch and after hydraulic fluid is warm, set throttle control to proper engine speed.
6. Always use outriggers from the truck to the ground. Be sure these are firm and adequately positioned. When rotating, **keep load as low to the ground as possible**.
7. Remove pendant control from cab or storage area. On smaller units, plug pendant into receptacle on crane. On larger units, remove pendant control from guard and unwrap cable from boom. Do not operate crane until cable is unwound completely. On all cranes, detach hook from dead man. Crane is now ready for operation.
8. Always boom up before rotating so the boom will clear the required boom support.
9. When extending the boom, always maintain clearance between the boom crown and the traveling block or hoist hook.
10. Always observe safe and practical operation to avoid possible accidents. Refer to Safety Tips and Precautions.
11. After completing lifting operations, return the boom and traveling block to stowed position on the boom support. Avoid unneeded pressure on the boom support.
12. Store pendant control on proper location (in cab or on crane).
13. Return outriggers to stowed position. Make sure they are pinned in place.
14. Check work area for any tools or equipment not stored.
15. Release throttle control, depress clutch and disengage PTO. deactivate any crane power switches.
16. Report any unusual occurrence during crane operation that may indicate required maintenance or repair.
17. **NEVER use two cranes to support a load too large for either crane.**
18. Spray all electrical equipment with special corrosion resistant coating. This eliminates rust or corrosion due to melting and freezing action of condensation.

OPERATION OF OUTRIGGER

For hydraulic outriggers:

1. Shift crane/outrigger control valve to "outrigger" position.
2. While operating the outrigger control valves (near the outrigger cylinders) simultaneously operate the boom-up control switch. This will allow the hydraulic system to build pressure.
3. After outriggers are positioned, return crane/outrigger selector to "crane" position.
4. Crane is now ready to operate.

For manual outriggers:

1. Pull lock pins to release drop down outrigger and move to outermost lock position.
2. Make sure lock pins are reinstalled properly.
3. Lower outrigger pad to firm ground and adjust foot to take out slack.
4. Crane is now ready to operate.

QUALIFICATIONS FOR AND CONDUCT OF OPERATORS AND OPERATING PRACTICES

OPERATORS

1. Crane operation shall be limited to personnel with the following minimum qualifications:
 - A. Designated persons.
 - B. Trainees under the direct supervision of a designated person.
 - C. Maintenance and test personnel (when it is necessary in the performance of their duties).
 - D. Inspectors (crane).
2. No one other than the personnel specified above shall enter the operating area of a crane with the exception of persons such as oilers, supervisors, and those specified persons authorized by supervisors whose duties require them to do so and then only in the performance of their duties and with the knowledge of the operator or other persons.

QUALIFICATIONS FOR OPERATORS

3. Operators shall be required by the employer to pass a practical operating examination. Qualifications shall be limited to the specific type of equipment for which examined.
4. Operators and operator trainees shall meet the following physical qualifications:
 - A. Vision of at least 20/30 Snellen in one eye and 20/50 in the other, with or without corrective lenses.
 - B. Ability to distinguish colors, regardless of position, if colors differentiation is required for operation.
 - C. Adequate hearing with or without hearing aid for the specific operation.
5. Evidence of physical defects or emotional instability which render a hazard to operator or others, which in the opinion of the examiner could interfere with the operator's performance may be sufficient cause for disqualification. In such cases, specialized clinical or medical judgment and tests may be required.
6. Evidence that the operator is subject to seizures or loss of physical control shall be sufficient reason for disqualification. Specialized medical tests may be required to determine these conditions.
7. Operators and operator trainees should have normal depth perception, coordination, and no

tendencies to dizziness or similar undesirable characteristics.

8. In addition to the above listed requirements, the operator shall:
 - A. Demonstrate the ability to comprehend and interpret all labels, operator's manuals, safety codes and other information pertinent to correct crane operations.
 - B. Possess knowledge of emergency procedures and implementation of same.
 - C. Demonstrate to the employer the ability to operate the specific type of equipment.
 - D. Be familiar with the applicable safety regulations.
 - E. Understand responsibility for maintenance requirements of crane.
 - F. Be thoroughly familiar with the crane and its control functions.
 - G. Understand the operating procedures as outlined by the manufacturer.

CONDUCT OF OPERATORS

9. The operator shall not engage in any practice, which will divert his attention while actually operating the crane.
10. Each operator shall be responsible for those operations under the operator's direct control. Whenever there is any doubt as to safety, the operator shall consult with the supervisor before handling the loads.
11. The operator should not leave a suspended load unattended unless specific precautions have been instituted and are in place.
12. If there is a warning sign on the switch or engine starting controls, the operator shall not close the switch or start the engine until the warning sign has been removed by the appointed person.
13. Before closing the switch or starting the engine, the operator shall see that all controls are in the "OFF" or neutral position and all personnel are in the clear.
14. If power fails during operation, the operator shall:
 - A. move power controls to the "OFF" or neutral position.
 - B. land the suspended load and boom, if practical.

QUALIFICATIONS FOR AND CONDUCT OF OPERATORS AND OPERATING PRACTICES

15. The operator shall be familiar with the equipment and its proper care. If adjustments or repairs are necessary, the operator shall report the same promptly to the appointed person, and shall also notify the next operator.
16. All controls shall be tested by the operator at the start of each shift. If any controls do not operate properly, they shall be adjusted or repaired before operations are begun
17. Stabilizers shall be visible to the operator while extending or setting unless operator is assisted by a signal person.

OPERATING PRACTICES

HANDLING THE LOAD

18. Size of load

- A. No crane shall be loaded beyond the rated load except for test purposes.
- B. The load to be lifted is to be within the rated load of the crane and its existing configuration.
- C. When loads which are not accurately known are to be lifted, the person responsible for the job shall ascertain that the weight of the load does not exceed the crane rated load at the radius at which the load is to be lifted.

19. Attaching the load

- A. The load shall be attached to the hook by means of slings or other devices of sufficient capacity.
- B. Hoist rope shall not be wrapped around the load.

20. Moving the load

- A. The operator shall determine that:
- B. The crane is level and, where necessary, the vehicle/carrier is blocked properly.
- C. The load is well secured and balanced in the sling or lifting device before it is lifted more than a few inches.
- D. Means are provided to hold the vehicle stationary while operating the crane.
- E. Before starting to lift, the hook shall be brought over the load in such a manner as to minimize swinging.
- F. During lifting care shall be taken that:

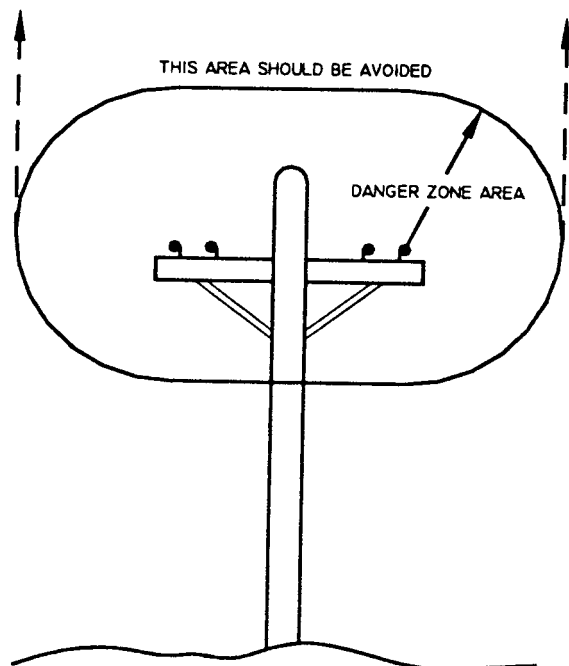
1. There is no sudden acceleration or deceleration of the moving load.
 2. Load, boom or other parts of the crane do not contact any obstruction.
- G. Cranes shall not be used for dragging loads sideways.
- H. This standard recognizes that articulating boom cranes are designed and intended for handling materials. They do not meet personnel lift or elevator requirements. Therefore, no lifting, lowering, swinging or traveling shall be done while a person is on the hook or load. Hook attached suspended work platforms (baskets) shall not be used with cranes covered by this standard. Work platforms attached to the boom must be approved by crane manufacturer.
- I. The operator should avoid carrying loads over people.
- J. When the crane is so equipped, the stabilizers shall be fully extended and set. Blocking under stabilizers shall meet the requirements as follows:
1. Strong enough to prevent crushing.
 2. Of such thickness, width and length as to completely support the stabilizer pad.
- K. Firm footing under all tires, or individual stabilizer pads should be level. Where such a footing is not otherwise supplied, it should be provided by timbers, cribbing, or other structural members to distribute the load so as to not exceed allowable bearing capacity or the underlying material.
- L. In transit, the boom shall be carried in stowed position.
- M. When rotating the crane, sudden starts and stops shall be avoided. rotational speed shall be such that the load does not swing out beyond the radius at which it can be controlled.
- N. The crane shall not be transported with a load on the hook unless recommended by the manufacturer.
- O. No person should be permitted to stand or pass under a suspended load.

21. Stowing procedure. Follow the manufacturer's procedure and sequence when stowing and unstowing the crane

QUALIFICATIONS FOR AND CONDUCT OF OPERATORS AND OPERATING PRACTICES

MISCELLANEOUS

OPERATING NEAR ELECTRICAL POWER LINES



22. Cranes shall be operated so that no part of the crane or load enters into the danger zone shown above.

EXCEPTIONS

- A. The danger zone may be entered after confirmation by an appointed person that the electrical distribution and transmission lines have been de-energized and visibly grounded at the point of work; or
- B. The danger zone may be entered if insulating barriers (not a part of nor an attachment to the crane) have been erected to prevent physical contact with the lines.

23. For lines rated 50 kV or below, minimum clearance between the lines and any part of the crane or load (including handling appendages) shall be 10-ft. (3m). For higher voltages, see Table 1.
24. Caution shall be exercised when working near overhead lines, because they can move horizontally or vertically due to wind, moving the danger zone to new positions.

25. In transit with no load and boom lowered the clearance shall be specified in Table 1.
26. A qualified signalperson shall be assigned to observe the clearance and give warning before approaching the above limits.
- A. Any overhead wire shall be considered to be an energized line unless and until the person owning such line or the electrical utility authorities verify that it is not an energized line.
- B. Exceptions to this procedure, if approved by the administrative or regulatory authority if the alternate procedure provides equivalent protection and set forth in writing.
- C. Durable signs shall be installed at the operator's station and on the outside of the crane, warning that electrocution or serious bodily injury may occur unless a minimum clearance of 10 ft. (3.0m) between the crane or the load being handled and energized power lines. Greater clearances are required because of higher voltage as stated above. These signs shall be revised but not removed when local jurisdiction requires greater clearances.

TABLE 1

normal voltage, kV (phase to phase)		minimum required clearance	
		ft	(m)
<u>when operating near high voltage power lines</u>			
over	to 50	10	(3.50)
over	50 to 200	15	(4.6)
over	200 to 350	20	(6.1)
over	350 to 500	25	(7.62)
over	500 to 750	35	(10.67)
over	750 to 1000	45	(13.72)
<u>while in transit with no load and boom lowered</u>			
over	to 0.75	4	(1.22)
over	0.75 to 50	6	(1.83)
over	50 to 345	10	(3.83)
over	345 to 750	16	(4.87)
over	750 to 1000	20	(6.1)

NOTES

INSPECTION, TESTING AND MAINTENANCE GENERAL

INSPECTION CLASSIFICATION

1. **Initial inspection.** Prior to initial use, all new, altered, modified or extensively repaired cranes shall be inspected by a designated person to insure compliance with provisions of this standard.
2. **Regular inspection.** Inspection procedure for cranes in regular service is divided into two general classifications based upon the intervals at which inspection should be performed. The intervals in turn are dependent upon the nature of the components of the crane and the degree of their exposure to wear, deterioration, or malfunction. The two general classifications are herein designated as "frequent" and "periodic" with respective intervals between inspections as defined below.
 - A. frequent inspection - daily to monthly intervals
 - B. periodic inspection - one to twelve intervals or as specifically recommended by the manufacturer

FREQUENT INSPECTION

3. **Inspection shall be performed by designated personnel.**
 - A. control mechanisms for maladjustment interfering with proper operation - daily, when used
 - B. control mechanisms for excessive wear of components and contamination by lubricants or other foreign matter
 - C. safety devices for malfunction
 - D. all hydraulic hoses, particularly those which flex in normal operation of crane functions, should be visually inspected once every working day, when used
 - E. hooks and latches for deformation, chemical damage, cracks, and wear. Refer to ANSI/ASME B30.10
 - F. rope reeving for compliance with crane manufacturer's specifications, if optional winch is used

- G. electrical apparatus for malfunctioning, signs of excessive deterioration, dirt and moisture accumulation
- H. hydraulic system for proper oil level and leaks daily
- I. tires for recommended inflation pressure, cuts and loose wheel nuts
- J. connecting pins and locking device for wear and damage

PERIODIC INSPECTION

4. **Deformed, cracked or corroded members in the crane structure and carrier**
5. **Loose bolts, particularly mounting bolts.**
6. **Cracked or worn sheaves and drums.**
7. **Worn, cracked, or distorted parts such as pins, bearings, shafts, gears, rollers and devices.**
8. **Excessive wear on brake and clutch system parts and lining.**
9. **Crane hooks inspected for cracks.**
10. **Travel steering, braking, and locking devices, for malfunction.**
11. **Excessively worn or damaged tires.**
12. **Hydraulic and pneumatic hose, fittings, and tubing inspection.**
 - A. evidence of leakage at the surface of the flexible hose or its junction with metal and coupling
 - B. A. blistering, or abnormal deformation to the outer covering of the hydraulic or pneumatic hose
 - C. A. leakage at threaded or clamped joints that cannot be eliminated by normal tightening or recommended procedures
 - D. A. evidence of excessive abrasion or scrubbing on the outer surface of a hose, rigid tube, or fitting. Means shall be taken to eliminate the interference of elements in contact or otherwise protect the components

INSPECTION, TESTING AND MAINTENANCE GENERAL

13. Hydraulic and pneumatic pumps and motors inspection.

- A. loose bolts or fasteners
- B. leaks at joints between sections
- C. shaft seal leaks
- D. unusual noises or vibrations
- E. loss of operating speed
- F. excessive heating of the fluid
- G. loss of pressure

14. Hydraulic and pneumatic valves inspection

- A. cracks in valve housing
- B. improper return of spool to neutral position
- C. leaks at spools or joints
- D. sticking spools
- E. failure of relief valves to attain or maintain correct pressure setting
- F. relief valve pressure shall be checked as specified by the manufacturers

15. Hydraulic and pneumatic cylinders inspection.

- A. drifting caused by fluid leaking across piston
- B. rod seals leaking
- C. leaks at welding joints
- D. scored, nicked, or dented cylinder rods
- E. damaged case (barrel)
- F. loose or deformed rod eyes or connecting joints

16. Hydraulic filters. Evidence of rubber particles on the filter elements may indicate hose, "O" ring, or other rubber component deterioration. Metal chips or pieces on the filter may denote failure in pumps, motors, or cylinders. Further checking will be necessary to determine origin of the problem before corrective action can be taken.

17. Labels are to be in place and legible.

CRANES NOT IN REGULAR USE

18. A crane which has been idle for a period of over one month or more, but not less than six months, shall be given an inspection conforming with the initial-regular- frequent inspections

19. A crane which has been idle for a period of over six months shall be given a complete inspection conforming with the initial-regular- frequent inspection requirements.

INSPECTION RECORDS

20. Dated records for periodic inspection should be made on critical items such as brakes, crane hooks, rope, hydraulic and pneumatic cylinders, and hydraulic and pneumatic relief pressure valves. Records should be kept available to an appointed person.

OPERATIONAL TESTS

21. Prior to initial use, all new, altered, modified, or extensively repaired cranes shall be tested for compliance with the operational requirements of this section, including functions such as the following:

- A. load lifting and lowering mechanisms
- B. boom lifting and lowering mechanisms
- C. boom extension and retraction mechanisms
- D. swing mechanisms
- E. safety devices
- F. operating controls comply with appropriate function labels

Operational crane test results shall be made available to an appointed person.

RATED TEST LOAD

Prior to initial use, altered, modified, or extensively repaired cranes shall be load tested by or under the direction of an appointed person.

INSPECTION, TESTING AND MAINTENANCE GENERAL

22. Test loads shall not exceed 110% of the manufacturer's load ratings.
23. Written reports shall be maintained showing test procedures and confirming the adequacy of repairs.

MAINTENANCE

PREVENTIVE MAINTENANCE

24. Before adjustment and repairs are started on a crane, the following precautions shall be taken as applicable:
- A. crane placed where it will cause the least interference with other equipment or operations
 - B. all controls at the "off" position
 - C. starting means rendered inoperative
 - D. boom lowered to the ground if possible or otherwise secured against dropping
 - E. relieve hydraulic oil pressure from all hydraulic circuits before loosening or removing hydraulic components
25. Warning or "OUT OF ORDER" signs shall be placed on the crane controls.
26. After adjustments and repairs have been made, the crane shall not be returned to service until all guards have been reinstalled, trapped air removed from hydraulic system (if required), safety devices reactivated, and maintenance equipment removed.

ADJUSTMENTS AND REPAIRS

27. Any hazardous conditions disclosed by the inspection requirements shall be corrected before operation of crane is resumed. Adjustments and repairs shall be done only by designated personnel.
28. Adjustments shall be maintained to assure correct functioning of components. The following are examples:
- A. functional operating mechanism
 - B. safety devices
 - C. control systems

29. Repairs or replacements shall be provided as needed for operation.

The following are examples:

- A. critical parts of functional operating mechanisms which are cracked, broken, corroded, bent, or excessively worn
 - B. critical parts of the crane structure which are cracked, bent, broken, or excessively corroded
 - C. crane hooks showing cracks, damage, or corrosion shall be taken out of service. Repairs by welding are not recommended
30. Instructions shall be provided by the manufacturer for the removal of air from hydraulic circuits.

LUBRICATION

All moving parts of the crane, for which lubrication is specified, should be regularly lubricated per the manufacturer's recommendations and procedures.

ROPE INSPECTION

31. Frequent Inspection

- A. All running ropes in service should be visually inspected once each working day. A visual inspection shall consist of observation of all rope which can be in use during the days operations. These visual observations should be considered with discovering gross damage such as listed below, which may be an immediate hazard.
 - 1. distortion of the rope such as kinking, crushing, un-stranding, birdcaging, main strand displacement, or core protrusion. Loss of rope diameter in a short length or unevenness of outer strands should be replaced
 - 2. general corrosion
 - 3. broken or cut strands;
 - 4. number, distribution and type of visible broken wires. When such damage is discovered, the rope shall either be removed from service or given as inspection.

INSPECTION, TESTING AND MAINTENANCE GENERAL

- B. Care shall be taken when inspecting sections of rapid deterioration such as flange points, crossover points, and repetitive pickup points on drums.

32. Periodic inspection

- A. The inspection frequency shall be determined by a qualified person and shall be based on such factors as
 - 1. expected rope life as determined by experience on the particular installation or similar installations
 - 2. severity of environment
 - 3. percentage of capacity lifts
 - 4. frequency rates of operation
 - 5. exposure to shock loads

Inspection need not be at equal calendar intervals and should be more frequent as the rope approaches the end of it's service life. This inspection shall be made at least annually.

- B. Periodic inspection shall be performed by a designated person. This inspection shall cover the entire length of the rope. Only the surface wires need be inspected. No attempt should be made to open the rope. Any deterioration results in appreciable loss of original strength, such as described below, shall be noted and determination made as to whether use of the rope would constitute a hazard: points listed above reduction of rope diameter below nominal diameter due to loss of core support, internal or external corrosion, or wear of outside wires; severely corroded, cracked, bent, worn or improperly applied connections;
- C. Care shall be taken when inspecting sections subject to rapid deterioration such as the following:
 - 1. sections in contact with saddles, equalizer sheaves, or other sheaves where rope travel is limited
 - 2. sections of the rope at or near terminal ends where corroded or broken wires may protrude

ROPE REPLACEMENT

- 33. No precise rules can be given for determination of the exact time for replacement of rope, since many variable factors are involved.

Continued use in this respect depends upon good judgement by a designated person in evaluating remaining strength in a used rope after allowance for deterioration disclosed by inspection. Continued rope operation depends upon this remaining strength.

- 34. Conditions such as the following shall be reason for questioning continued use of the rope or increasing the frequency of inspection:

- A. in running ropes, six randomly distributed broken wires in one lay or three broken wires in one strand in one lay
- B. one outer wire broken at the contact point with the core of the rope structure and protrudes or loops out of the rope structure. Additional inspection of this section is required
- C. wear of one third of the original diameter of the outside individual wire
- D. kinking, crushing, birdcaging, or any other damage resulting in distortion of the rope structure
- E. evidence of any heat damage from any cause
- F. reduction from nominal diameter of more than 1/64 in. (0.4mm) for diameters up to and including 5/16 in. (8 mm), 1/32 in. (0.8 mm) for diameter 3/8 in. (9.5 mm) to and including 1/2 in. (13 mm), 3/64 in. (1.2 mm) for diameter 9/16 in. (14.5 mm) to and including 3/4 in. (19 mm), 1/16 in. (1.6 mm) for diameter 7/8 in. (22 mm) to and including 1 1/8 in. (29 mm), 3/32 in. (2.4 mm) for diameters 1 1/4 in. (32 mm) to and including 1 1/2 in. (38 mm)
- G. In standing ropes, more than two broken wires in one lay in sections beyond end connections or more than one broken wire at an end connection.

INSPECTION, TESTING AND MAINTENANCE

GENERAL

- H. Replacement rope shall have a strength rating at least as great as the original rope furnished or recommended by the crane manufacturer. Any deviation from the original size, grade, or construction shall be specified by a rope manufacturer, or a qualified person.
35. Rope not in regular use: all rope which has been idle for a period of a month or more due to shutdown or storage of a crane on which it is installed, shall be given an inspection in accordance with above information before it is placed in service. This inspection shall be for all types of deterioration and shall be performed by a qualified person.
36. Inspection records
- A. A. frequent inspection- no records required
 - B. A. periodic inspections- in order to establish data as a basis for judging the proper time for replacement, a dated report condition at each periodic inspection should be kept on file. This report shall cover points of deterioration listed above.
- ROPE MAINTENANCE**
37. Rope should be stored to prevent damage or deterioration.
38. Unreeling or uncoiling of rope shall be done as recommended by the rope manufacturer and with care to avoid kinking or inducing twist.
39. Before cutting a rope, seizing shall be placed on each side of the place where the rope is to be cut to prevent unlaying of the strands. On pre-formed rope, one seizing on each side of the cut is required. On non-preformed ropes of 7/8 in. (22 mm) diameter or smaller, two seizings on each side of the cut are required, and for non-preformed rope 1 in. (25 mm) diameter or larger, three seizings on each side of the cut are required.
40. During installation care should be exercised to avoid dragging of the rope in the dirt or around objects which will scrape, nick crush or induce sharp bends in it.
41. Rope should be maintained in a well-lubricated condition. It is important that lubricant applied as a part of a maintenance program shall be compatible with the original lubricant and to this end the rope manufacturer should be consulted. Lubricant applied shall be the type which does not hinder visual inspection. Those sections of rope which are located over sheaves or otherwise hidden during inspection and maintenance procedures require special attention when lubricating rope. The object of rope lubrication is to reduce internal friction and to prevent corrosion.
42. When an operating rope shows greater wear or well defined localized areas than on the remainder of the rope, rope life can be extended in cases where a section at the worn end, and thus shifting the wear to different areas of the rope.

MAINTENANCE OF BATTERIES

Maintenance of Auto Crane unit batteries differs very little from the generally prescribed maintenance of any lead acid battery. All batteries must be kept *properly charged, properly filled with water, and relatively clean.*

Keep Properly Charged

Many things affect the proper charge to a battery, such as:

- 1 Regulator settings
- 2 Proper tightness of belts on the alternator or generator
- 3 Good, clean connections of all cables and wires at the following places:
 - A. Battery
 - B. Regulator
 - C. Starting motor
 - D. Alternator or generator
 - E. Ground connections (most important)

It is of extreme importance to keep the battery as fully charged as possible without overcharging, especially when vehicles are left outside for extended periods in extremely cold climates. A battery *can* freeze. Freezing points for various specific gravities of acid are as follows:

Specific Gravity (Corrected to 80°F)	Freezing Temp. Degrees F.
1.280	-90°F
1.250	-62°F
1.200	-16°F
1.150	5°F
1.100	19°F

As shown, a half-charged battery (about 1.200 specific gravity) cannot stand for any length of time at 20°F or it will freeze.

The *main reason* for keeping the battery as fully charged as possible without over-charging is to ensure that power is available even though the vehicle has been standing for some time.

Keep Properly Filled with Water

The battery should *always* be properly filled with water. If the electrolyte level is allowed to fall below the top of the plates, the results become threefold:

- 1 The exposed portion of the plate will become sulfated.
- 2 The portion of the plate exposed is not usable.
- 3 That portion of the acid remaining becomes more concentrated and may cause more rapid deterioration of the remaining parts of the battery.

Keep A Relatively Clean Battery

The battery should be kept clean. Batteries filled with acid and which are not in use self-discharge to a limited degree because of the nature of the materials within the battery. If dirt is allowed to collect on the top of the battery (and this dirt absorbs moisture) and electrical path can be set up between the various terminals of the battery and the ground. Once such a path has been established, the self-discharge of the battery is accelerated. This also accelerates corrosion of the battery cables at the terminals.

Periodic Maintenance is Needed

A definite program of periodic maintenance of all batteries should be conducted on a regular basis. Periodic maintenance includes:

- 1 Checking belts for tightness on the charging equipment
- 2 Checking battery electrolyte levels
- 3 Checking cables for good connections
- 4 Cleaning where corrosion is apparent

When corrosion is cleaned off, the cable terminals and battery terminals should be coated with a light coating of petroleum jelly before they are replaced. When terminals are cleaned, the top of the battery should be cleaned with a mild solution of soda water.

MAINTENANCE OF BATTERIES

Low Maintenance Batteries (Maintenance Free)

Low maintenance batteries should not be used on Auto Cranes or trucks equipped with Auto Cranes. The batteries are not designed for "deep" discharge.

Testing Your Battery

If the condition of the battery is in question, it should be removed from the vehicle, taken to the shop, and allowed to reach room temperature. It should then be recharged until specific gravity readings taken at one-half hour intervals. If the specific gravity readings are fairly uniform, the battery should be checked with a high rate tester. Use the tester in accordance with the manufacturer's instructions. The high rate tester is the best method to test a questionable battery.

If, after charging, it is noted that the specific gravity reading of one cell is 30 points less than any of the other cells, it may be assumed that the cell is bad and that the battery should be replaced. If all cells are uniform but not up to full charge, a low rate of charge should be attempted for an extended time. This usually will recover a badly sulfated battery.

Replacing a Battery

If it is necessary to replace a battery, and a dry charge battery is used, the following procedure applies:

- 1 Fill the battery with electrolyte of the proper specific gravity.
- 2 Place the battery on charge according to the manufacturer's instructions.

It is essential that the second step above be followed to ensure that the battery going on the vehicle is fully charged.

It is also very important that the battery hold-downs be checked periodically to ensure that the batteries are properly positioned to avoid vibration problems, breakage of cables or terminals. Care must be taken to avoid cracking or breaking containers or covers by tightening hold-down fixtures excessively. They also must not be so loose that breakage results from a hold-down that is too loose.

NOTES

SAFETY DECAL SECTION

4004EH

PART NO.: 40579000
 DECAL: OPERATING INSTRUCTIONS
 FUNCTION: To inform the operator of the proper procedure to follow for safe operation of the crane.
 USED ON: All Cranes
 QUANTITY: 1
 PLACEMENT: Right side plate

⚠ CAUTION

1. INSPECT VEHICLE AND CRANE INCLUDING OPERATION, PRIOR TO USE DAILY.
2. DO NOT USE THIS EQUIPMENT EXCEPT ON SOLID, LEVEL SURFACE WITH OUTRIGGERS PROPERLY EXTENDED AND CRANE MOUNTED ON FACTORY-RECOMMENDED TRUCK.
3. BEFORE OPERATING THE CRANE, REFER TO MAXIMUM LOAD (CAPACITY) CHART ON CRANE FOR OPERATING (LOAD) LIMITATIONS.
4. OPERATE ALL CONTROLS SLOWLY AND SMOOTHLY.
5. KEEP LOAD UNDER BOOM TIP. DO NOT SIDE LOAD BOOM OR DRAG LOADS. AVOID FREE SWINGING LOADS.
6. DO NOT OPERATE, WALK OR STAND BENEATH BOOM OR A SUSPENDED LOAD.
7. KEEP AT LEAST 5 WRAPS OF LOADLINE ON HOIST DRUM.
8. FOR TRAVELING, BOOM AND OUTRIGGERS MUST BE IN THE STOWED POSITION.
9. ALL REMOVABLE PENDANTS MUST BE STORED IN CAB OR TOOL COMPARTMENT WHEN CRANE IS NOT IN USE.

P/N 040579

PART NO.: 040580000
 DECAL: OPERATING TRAINING
 FUNCTION: To inform the operator of the need to receive proper training before using the crane.
 USED ON: All Cranes
 QUANTITY: 1
 PLACEMENT: Right side plate

⚠ DANGER

AN UNTRAINED OPERATOR
SUBJECTS HIMSELF AND
OTHERS TO

DEATH OR SERIOUS INJURY

- 1.) YOU MUST HAVE BEEN TRAINED IN THE OPERATION OF THIS CRANE, AND
- 2.) YOU MUST KNOW AND FOLLOW THE SAFETY AND OPERATING RECOMMENDATIONS CONTAINED IN THE MANUFACTURER'S MANUAL, YOUR EMPLOYER'S WORK RULES AND APPLICABLE GOVERNMENT REGULATIONS.

P/N 040580

PART NO.: 040632000
 DECAL: TAMPERING WITH OVERLOAD DEVICE
 FUNCTION: To inform the operator that tampering with the overload device may cause a unit failure or possible personal injury.
 USED ON: All Cranes equipped with a load sensor
 QUANTITY: 1
 PLACEMENT: Right side of valve sensor.

⚠ WARNING

TAMPERING WITH OVERLOAD DEVICE VOIDS WARRANTY. OVERLOADED CRANE MAY HYDRAULICALLY RELEASE AND LET LOAD DOWN TO GROUND.

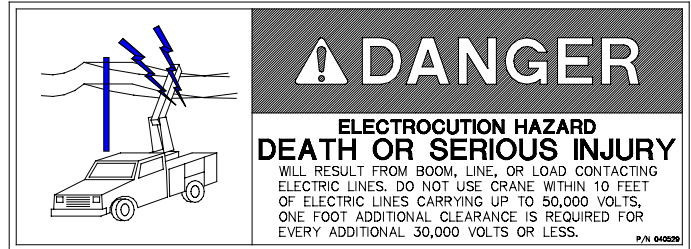
OVERLOAD PROTECTION DEVICE CANNOT FUNCTION WITH BOOM BELOW HORIZONTAL (0°). HOIST UP, BOOM DOWN, AND EXTEND OUT WILL BE INOPERATIVE WHEN CRANE IS IN OVERLOAD CONDITION.

P/N 040632

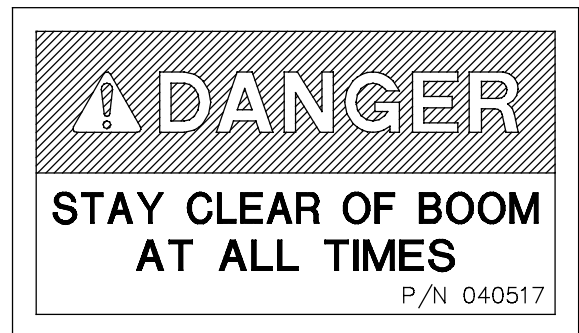
SAFETY DECAL SECTION

4004EH

PART NO.: 040529000
 DECAL: ELECTROCUTION HAZARD
 FUNCTION: To inform the operator of the hazard involved with contacting electrical power lines with crane boom.
 USED ON: Articulated & Stiff Boom Cranes
 QUANTITY: 2
 PLACEMENT: Both sides of end of lower boom



PART NO.: 040517000
 DECAL: STAY CLEAR OF BOOM
 FUNCTION: To inform the operator of the hazard of proximity or contact with the crane boom during operation.
 USED ON: All Cranes
 QUANTITY: 2
 PLACEMENT: Both sides of crown



PART NO.: 040518000
 DECAL: STAY CLEAR OF LOAD
 FUNCTION: To inform the operator of the hazard of proximity or contact with the crane boom during operation.
 USED ON: All Cranes
 QUANTITY: 2
 PLACEMENT: Both sides of crown plate



SAFETY DECAL SECTION

4004EH

PART NO.: 040587000

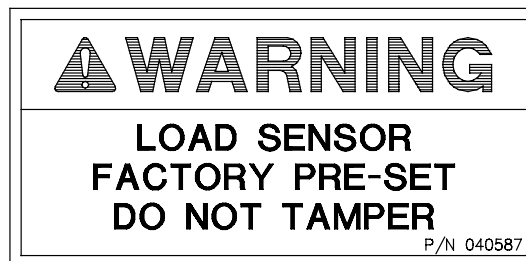
USED ON: All cranes equipped with a load sensor.

DECAL: LOAD SENSOR, DON'T TAMPER

QUANTITY: 1

FUNCTION: To inform the operator that the load sensor is pre-set and that tampering with the sensor may cause potentially hazardous situation.

PLACEMENT: On the lift cylinder near the load sensor



PART NO.: 040519000

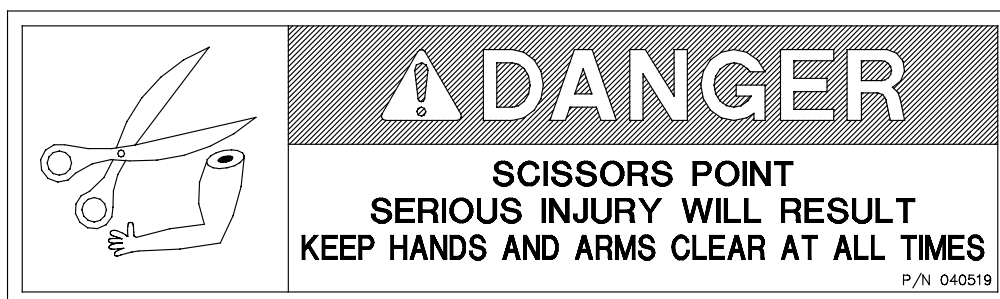
USED ON: All cranes.

DECAL: SCISSORS POINT

QUANTITY: 1

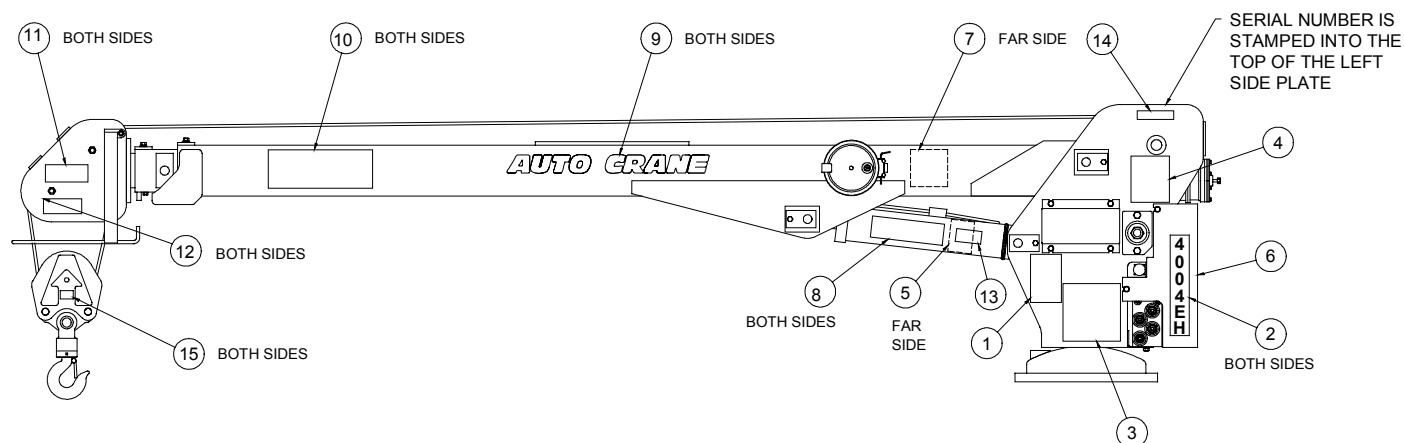
FUNCTION: To inform the operator of possible danger at scissors point on crane.

PLACEMENT: Both sides of the lift cylinder



DECAL DRAWING

4004EH 8-12-16 BOOM - P/N: 404009000



ITEM NO	QTY	PART NO.	DESCRIPTION
1	1	040579	CAUTION "INSPECT VEHICLE..." DECAL
2	2	404051	4004EH DECAL
3	1	404050	4004EH LOAD CHART (8-12-16) DECAL
4	1	040580	DANGER "AN UNTRAINED OPERATOR..." DECAL
5	1	040632	WARNING "TAMPERING WITH OVERLOAD..." DECAL
6	1	360034	LOGO DECAL
7	1	320318	ANGLE INDICATOR DECAL
8	2	040519	DANGER "SCISSORS POINT" DECAL
9	2	600047	AUTO CRANE DECAL
10	2	040529	DANGER "ELECTROCUTION HAZARD" DECAL
11	2	040517	DANGER "STAY CLEAR OF BOOM" DECAL
12	2	040518	DANGER "STAY CLEAR OF LOAD" DECAL
13	1	040587	WARNING "LOAD SENSOR PRESET" DECAL
14	1	330622	SERIAL NUMBER DECAL
15	2	360480100	DECAL, BLOCK WEIGHT & MAX. LOAD

GENERAL SPECIFICATIONS

4004EH SERIES

DIMENSIONS

Width: 21 in (.53 m)
Height: 32.50 in (.83 m)
Length: 11 ft 8 5/16 in (3.35 m)
Weight: 950 lbs (430 kg)
[Add 5 lbs (2.25 kg) for cable length
of 75 feet (23 m)]

CAPACITY

16,000 ft lbs (2.31 ton/m)
[ft lbs = horizontal distance from centerline of
rotation to free hanging weight (feet) x amount
of weight (pounds)]
See **Load Chart** section.

REACH

Main boom reaches 8 ft
Power boom will extend to 12 ft
Manual boom will extend to 16 ft

CABLE

80 ft (24.3 m) of 5/16 in (7.93 mm) diameter
aircraft quality cable is standard [75 ft (22.86
m) optional].

CHASSIS REQUIREMENTS

10,500 lbs (4,763 kg) GVWR minimum

HYDRAULIC SYSTEM

Pressure: 2200psi (15,169 kPa) relief setting

Flow: 0.7 GPM (2.65 lpm)

Filtration: System has 100 mesh strainer in
suction line.

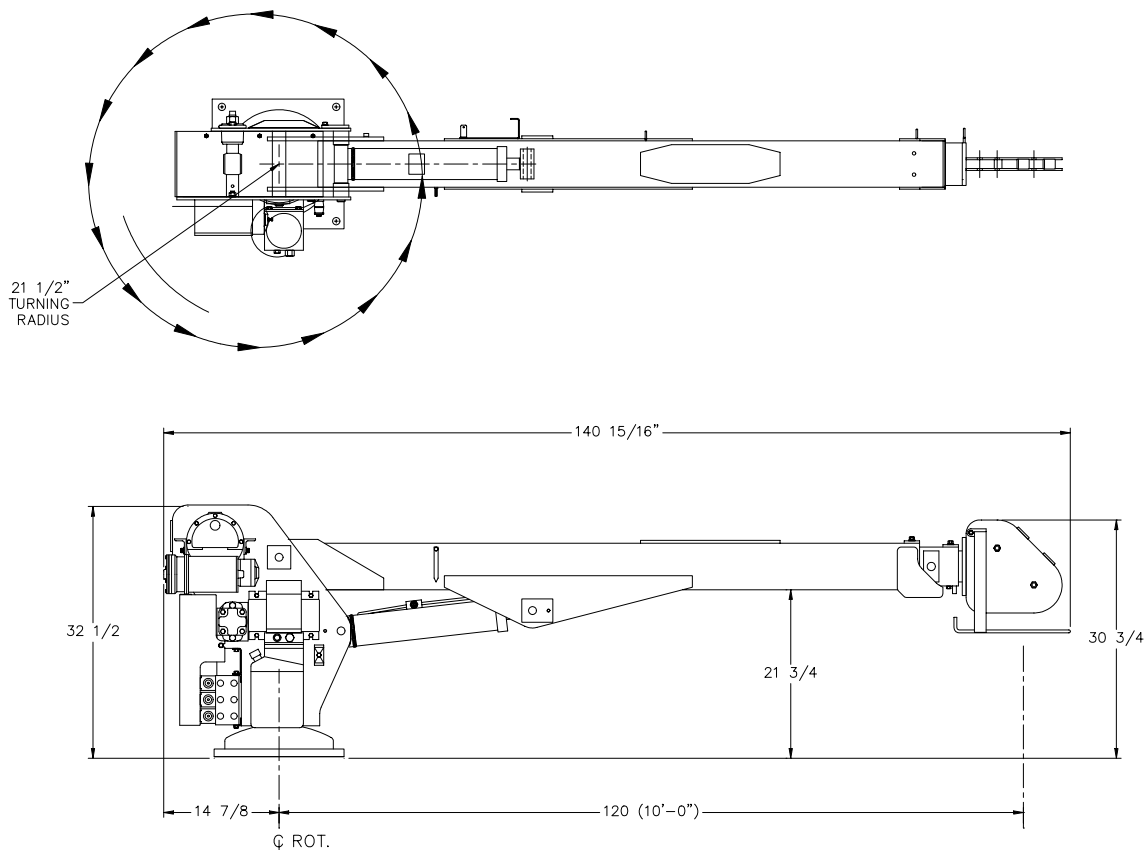
Oil Type: 10w Hydraulic Oil- Mobile DTE
13M, Exxon Unis N-32, Fina
Diekan.

ELECTRICAL SYSTEM REQUIREMENTS

Control voltage: 12 volt DC
Alternator: 70 amp (minimum)
Battery: 130 minute reserve
capacity (minimum)
Maintenance type

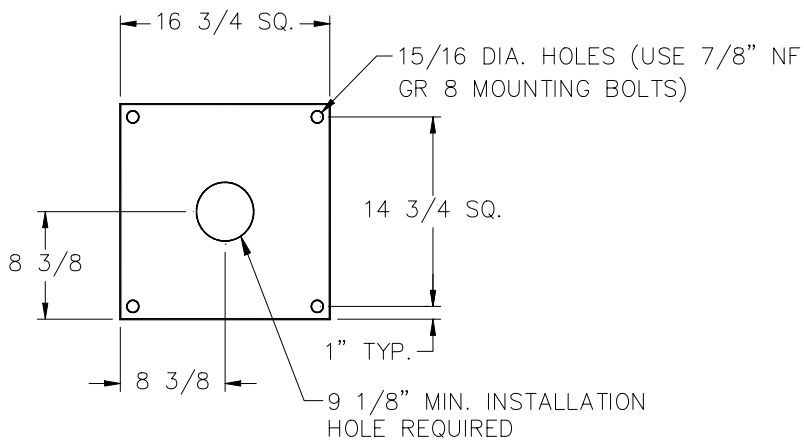
GENERAL DIMENSIONS

4004EH (8-12-16)



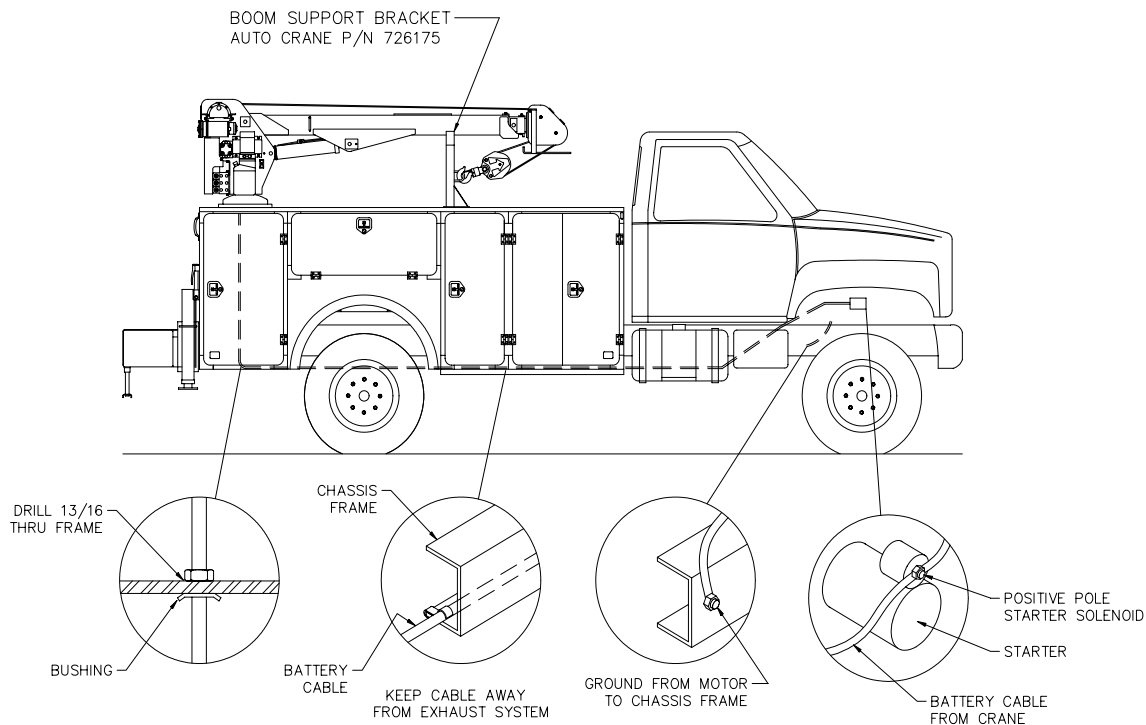
NOTES:

- A. MAX TURNING RADIUS AT ROTATION MOTOR = 13"
- B. MAX TURNING RADIUS AT HOIST ACTUATOR = 20 1/2"



ASSEMBLY & INSTALLATION INSTRUCTIONS

4004EH SERIES



INSTALLATION – BATTERY CABLE

1. Drill 13/16" hole in floor. Install bushing, which is connected to cable, so it fits hole snug.
2. Run cable to positive battery terminal. Connect black cable to negative battery terminal or suitable chassis ground point. Locate cables so that they will be protected. Avoid sharp edges. Use the No. 083800 frame clips provided to hold cables securely in place.
3. If the battery is grounded to the engine it is necessary to add an additional ground cable, from the engine to the chassis frame. In order to obtain maximum power to the crane.
4. **NOTICE:** We recommend replacing any non-maintenance truck battery with a maintenance type truck battery.
5. **CAUTION:** Boom must be properly secured in place, on a boom support bracket, when crane is not in use. This will prevent gear damage.
6. **NOTE:** For mounting bolt hole pattern – see GENERAL DIMENSIONS.

LUBRICATION & MAINTENANCE SCHEDULE for 4004EH

SERVICE PERFORMED	DAILY	WEEKLY	6 MOS	YEAR	NOTES
LOAD HOOK	X				INSPECT HOOK & LATCH FOR DEFORMATION, CRACKS, & CORROSION
CABLE DRUM	X				MAKE SURE CABLE IS WOUND EVENLY ON DRUM
HOIST CABLE	X				CHECK FOR FLATTENING, KINKS, & BROKEN STRANDS, SEE MANUAL
HYDRAULIC HOSES	X				VISUAL INSPECTION
HYDRAULIC FLUID	X				CHECK FLUID LEVEL
MOUNTING BOLTS		X			CHECK-TORQUE TO 440 FT-LBS AS REQUIRED
ROTATION WORM GEAR		X			LUBE WITH MOBILTAC LL, OR LUBRIPLATE P/N 15263, OR EQUIVALENT
SHEAVE BEARINGS		X			SEALED BEARING, REPLACE IF ROUGH OR LOOSE
ALL OTHER BOLTS		X			CHECK-TIGHTEN AS REQUIRED
BOOM PIVOTS		X			GREASE WITH MOBILPLEX EP-2 OR EQUIVALENT AT ZERKS
BOOM CYLINDER		X			CHECK AROUND CYLINDER ROD FOR EXCESS FLUID LEAKAGE
BOOM CYLINDER PINS		X			GREASE WITH MOBILPLEX EP-2 OR EQUIVALENT AT ZERKS
EXTENSION DETENT PIN		X			LUBE DETENT SPRING & BALL w/ WD-40
HOIST GEARBOX			X		WORM GEAR-EP GEAR LUBE SAE 80-90, SPUR GEAR SAE 30 OIL
HYDRAULIC FLUID				X	DRAIN, FLUSH, & REFILL WITH MOBIL DTE-13M, EXXON UNIVIS N-32 OR EQUAL
BOOM SLIDE PADS	PADS GREASED WHEN REPLACED				
CAUTION	{ Routine maintenance insures trouble-free operation and protects your investment. All warranties are void if maintenance is neglected.				

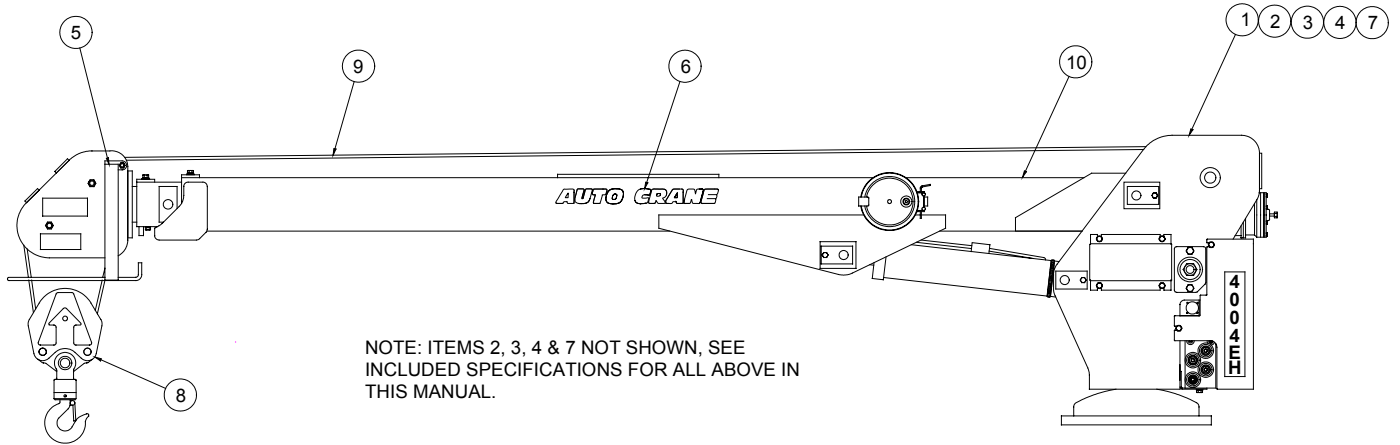
NOTES:

- { Use only authorized parts. Any damage or malfunction caused by the use of unauthorized parts is not covered by Warranty or Product Liability.
- { Once a bolt has been torqued to its rated capacity and then removed; the bolt should be replaced with a new one.
- { Auto Crane Company recommends that this crane be serviced per "Crane Inspection Log" P/N 999978. These logs should be filled in at the intervals noted and kept as a permanent record. Additional copies are available from your local distributor.

NOTES

4004EH TOP ASSEMBLY

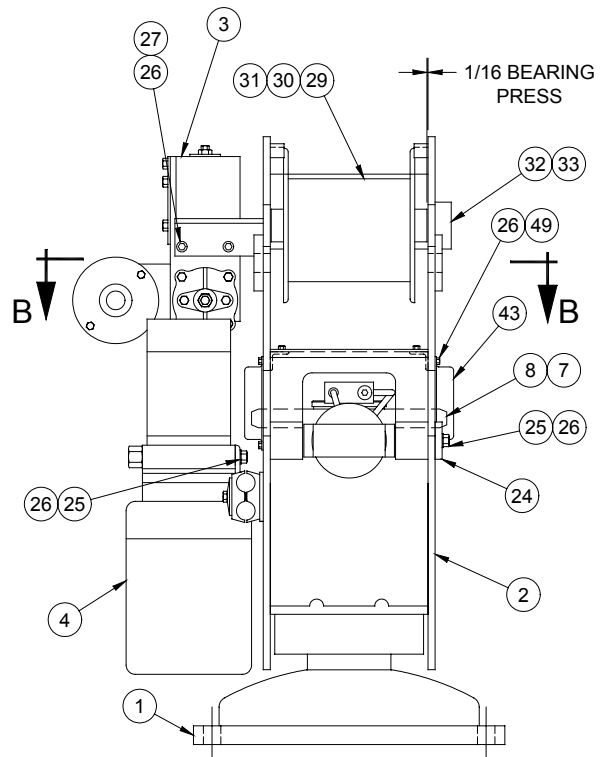
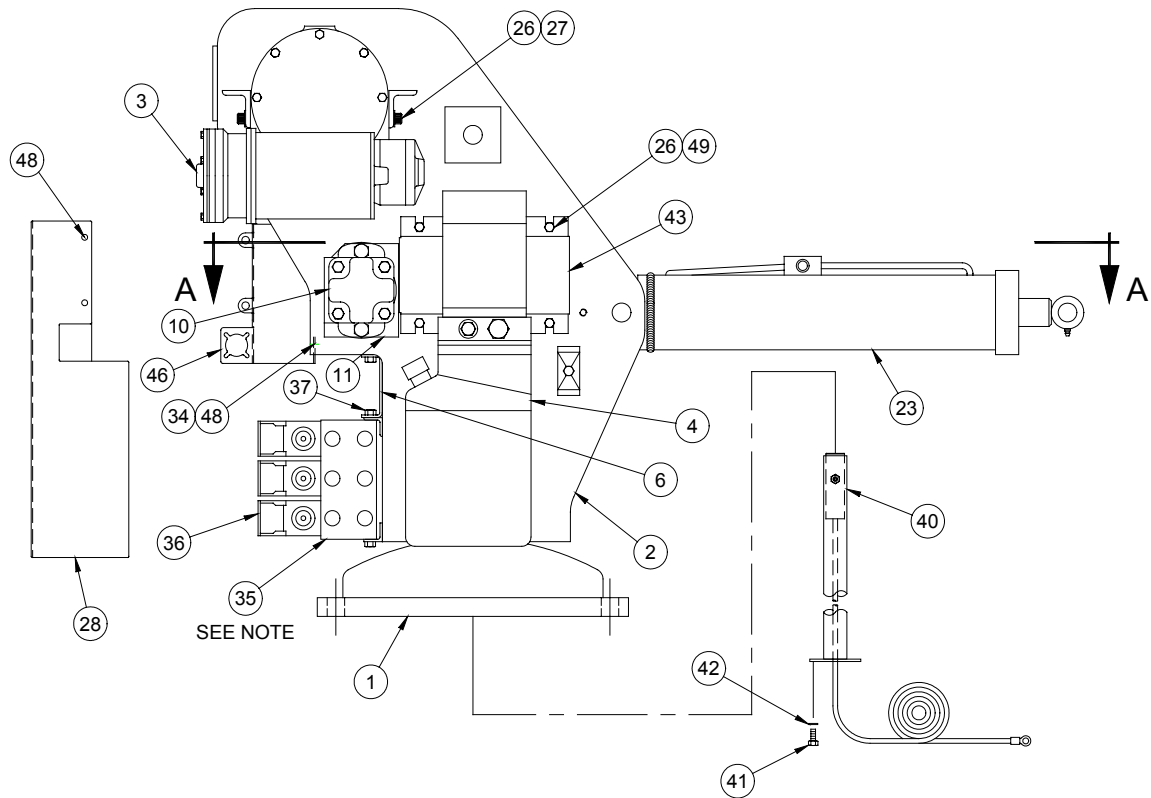
BOOM 8-12-16 – P/N: 404000001



ITEM NO.	QTY.	PART NO.	DESCRIPTION
1	1	404001001	UNIT LESS BOOM
2	1	680073001	ELECTRICAL ASSEMBLY
3	1	404003000	HYDRAULIC ASSEMBLY
4	1	404004000	SHIP KIT 4004EH
5	1	360822000	2 - BLOCK ASSEMBLY
6	1	404009000	DECAL LAYOUT 4004EH
7	1	680065000	PENDANT ASSEMBLY
8	1	360480000	TRAVELING BLOCK SHORT
9	1	360155000	CABLE ASSEMBLY 5/16
10	1	404010000	BOOM ASSEMBLY

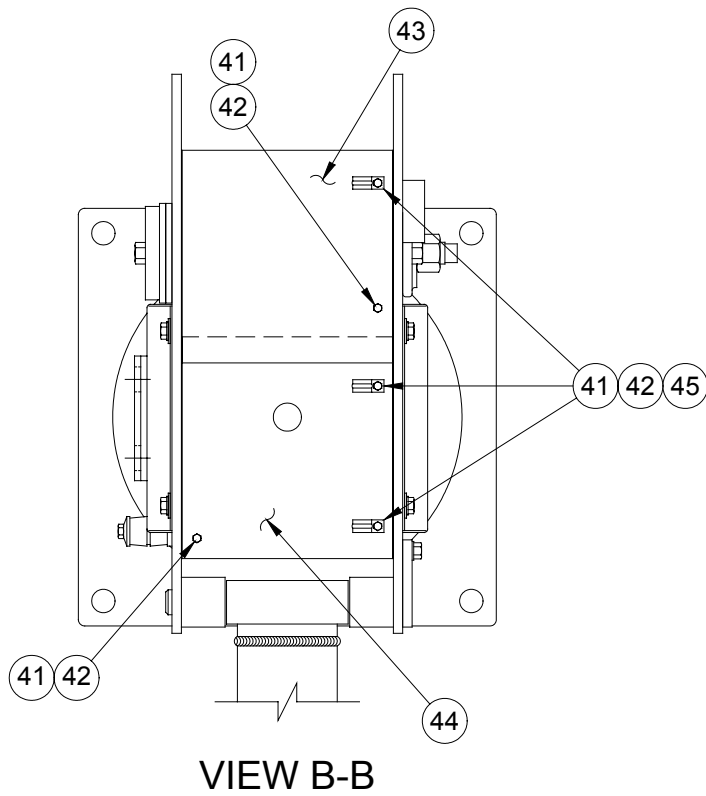
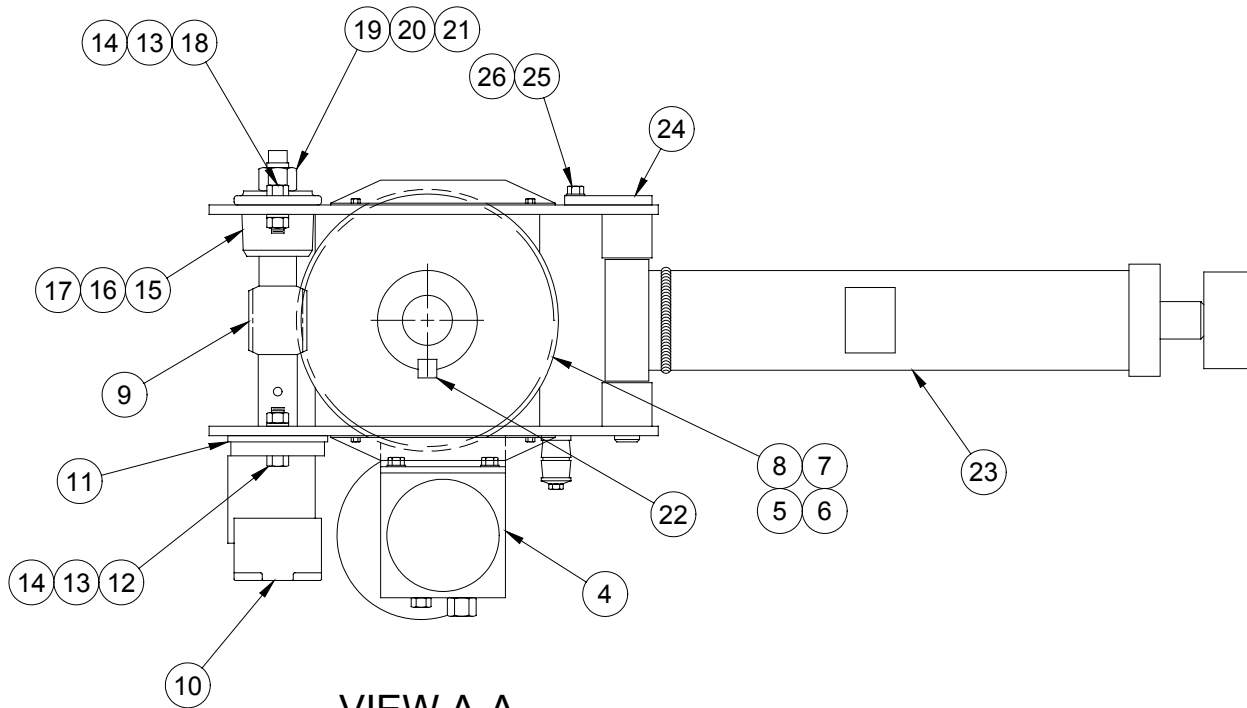
UNIT LESS BOOM

4004EH - P/N: 404001001



UNIT LESS BOOM

4004EH - P/N: 404001001



UNIT LESS BOOM

4004EH - P/N: 404001001

ITEM NO.	QTY.	PART NO.	DESCRIPTION
1	1	404025	PEDESTAL WELDMENT
2	1	404020001	SIDE PLATES/QUILL HOUSING WELDMENT
3	1	404168	HOIST ACTUATOR
4	1	320336	POWER UNIT
5	2	404017	BEARING ROTATION
6	1	404124	VALVE BANK BRACKET
7	2	404028	RETAINING RING GEAR
8	1	404016	WORM GEAR
9	1	404015	WORM
10	1	480027	ROTATION MOTOR
11	2	330484	SPACER
12	2	011603	CAPSCREW 1/2 NC X 1 3/4
13	4	021500	LOCKWASHER 1/2
14	4	017701	NUT 1/2 NC
15	2	330486	OIL SEAL
16	2	330485	BEARING
17	1	330472	HOUSING
18	2	010201	CAPSCREW 1/2 NC X 1 1/2
19	1	330483	SPACER
20	1	019000	LOCKNUT 7/8 NF
21	1	239300	GREASE ZERK
22	1	340602	KEY 3/4 SQ X 1
23	1	404005	BOOM UP CYLINDER
24	1	360624	PEDESTAL /CYLINDER PIN
25	3	366158	CAPSCREW 3/8 NC X 3/4 GR8
26	12	021100	LOCKWASHER 3/8
27	4	404081	SOCKET HEAD SCREW 3/8 NC X 7/8
28	1	320429002	COVER VALVE
29	1	404092	HOIST DRUM
30	1	480094	KEY 5/16 SQ X 8 1/8
31	2	480073	WINCH SHAFT SPACER
32	2	400500	BEARING
33	2	330468	SPLIT-LOCK COLLAR
34	4	736272	NUTSERT 1/4NC
35	1	202710	MANIFOLD
36	3	300204	DIRECTIONAL CONTROL VALVE
37	6	002614	SCW HX HD 5/16-18 UNC X 5/8
38	1	002900	SCW SET 1/4-20 UNC X 1/4
39	1	404057	POWER CABLE ASSY TO HOIST
40	1	404056	POWER CABLE ASSY

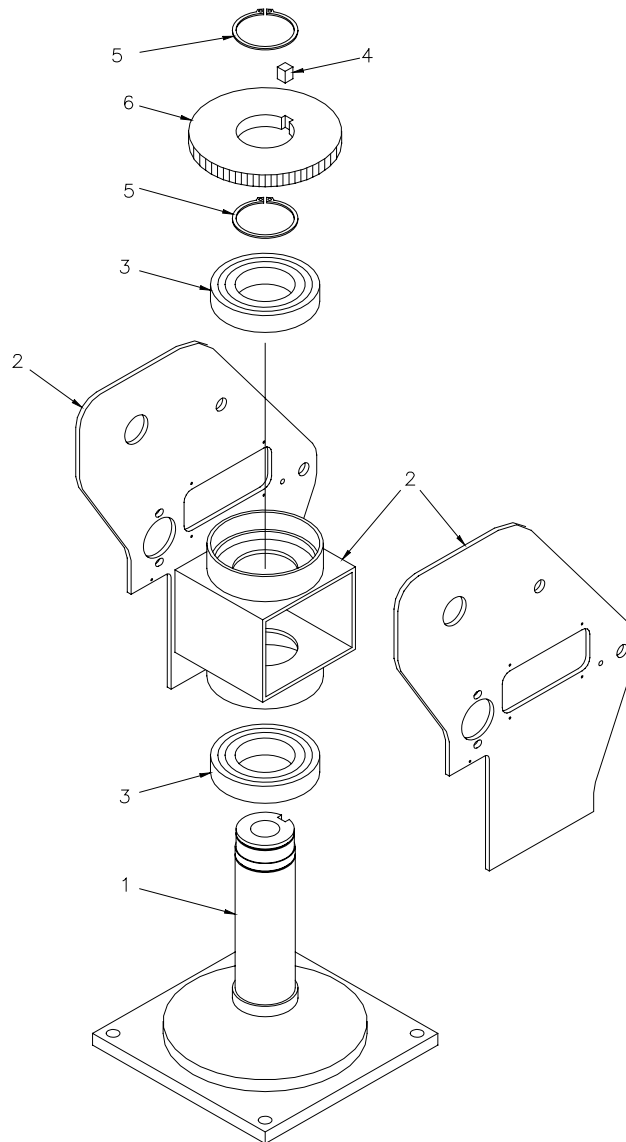
UNIT LESS BOOM
4004EH - P/N: 404001001

ITEM NO.	QTY.	PART NO.	DESCRIPTION
41	7	005401	SCW HX HD 1/4-20 UNC X 5/8
42	7	020200	WASHER SP LK 1/4
43	2	404094	COVER WORM GEAR
44	1	404140	COVER PEDESTAL WELDMENT RIGHT HAND
45	3	000115	CLIP #115 JIFFY CLIP
46	1	404170	RELAY PANEL ASSY (NOT SHOWN)
47	1	751138	RECTIFIER BRIDGE 25 AMP
48	8	005510	SCW WIZ LOCK 1/4-20 UNC X 3/4
49	8	008401	SCW HX HD 3/8-16 UNC X 1/2
50	2	021200	WASHER FL 3/8
51	1	404098001	COVER PEDESTAL WELDMENT LEFT
*52	4	015100	SCW HX HD 7/8 NF X 4 GR8 (NOT SHOWN)
*53	4	022200	WASHER LK 7/8 (NOT SHOWN)
*54	4	018900	NUT 7/8 NF GR8 (NOT SHOWN)
* REFERENCE ITEMS FOUND IN THE SHIP KIT			

NOTES

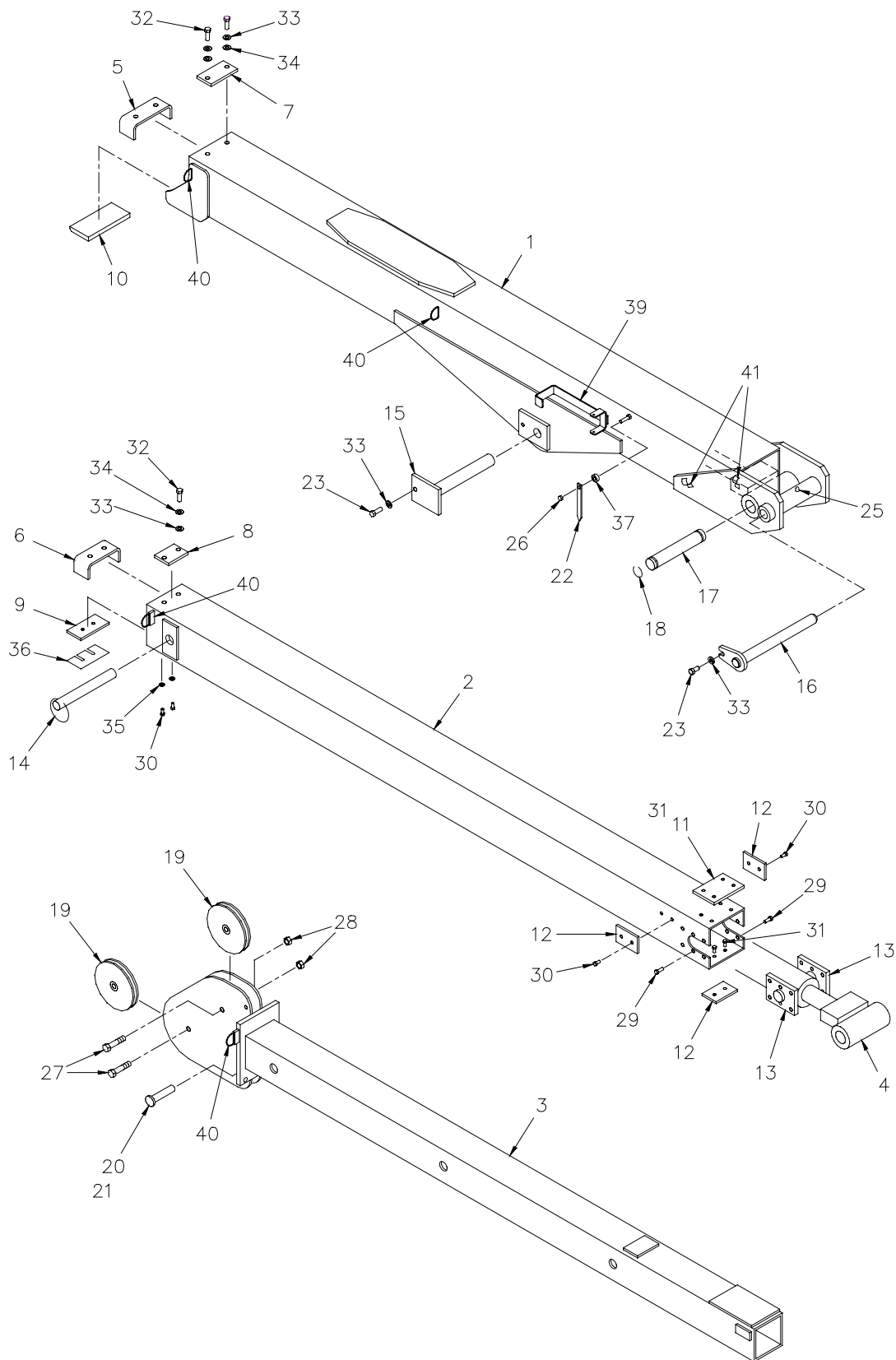
PEDESTAL ASSEMBLY

4004EH



ITEM NO.	QTY.	PART NO.	DESCRIPTION
1	1	404025	PEDESTAL
2	1	404020001	SIDE PLATES/QUILL HOUSING
3	2	404017	ROTATION BEARING
4	1	340602	KEY 3/4 SQ X 1"LG
5	2	404028	GEAR RETAINING RING
6	1	404016	WORM GEAR

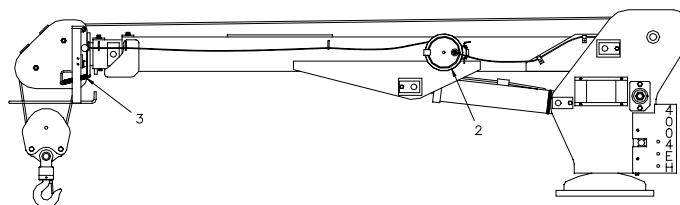
BOOM ASSEMBLY (8-12-16) ***4004EH - P/N 404010000***



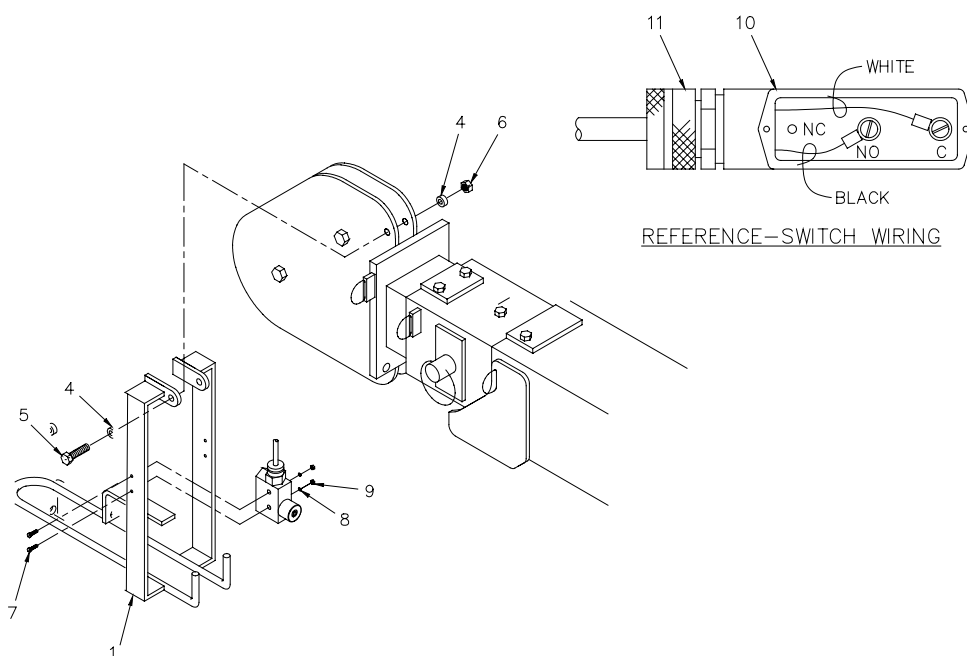
BOOM ASSEMBLY (8-12-16)
4004EH - P/N 404010000

ITEM NO.	QTY.	PART NO.	DESCRIPTION
1	1	404030	LOWER BOOM
2	1	404032	CENTER BOOM
3	1	404035	MANUAL BOOM
4	1	404006	BOOM EXTENSION CYLINDER
5	1	366183	CENTER BOOM STOP
6	1	366112	UPPER BOOM STOP
7	1	366201	BOOM TOP PAD
8	1	366202	BOOM TOP PAD
9	1	366199	BOOM PAD
10	1	366187	RETAINER LOWER PAD
11	2	480036	CENTER BOOM TOP PAD
12	2	366186	CENTER BOOM PAD
13	2	366184	EXTENSION CYLINDER RETAINER
14	1	366190	PIN ASSEMBLY w/LANYARD
15	1	360819	BOOM CYLINDER PIN
16	1	360625	LOWER BOOM PIVOT PIN
17	1	366193	EXTENSION CYLINDER PIN
18	2	480029	RETAINING RING
19	2	480130	SHEAVE ASSEMBLY
20	1	360814	CROWN PIN
21	1	360124	HITCH PIN
22	1	360038	ANGLE INDICATOR
23	2	366158	CAPSCREW 3/8NC X 3/4 GR8
24	1	480120	BOOM PAD
25	1	239000	GREASE ZERK
26	1	016300	LOCK NUT 1/4NC
27	2	011511	CAPSCREW 1/2NF X 2 1/4
28	2	017700	LOCK NUT 1/2NF
29	12	008400	CAPSCREW 3/8NC X 3/4
30	6	007808	CAPSCREW 5/16NC X 1/2
31	6	005406	CAPSCREW 1/4NF X 1/2
32	4	008800	CAPSCREW 3/8NC X 1
33	6	021100	LOCK WASHER 3/8
34	4	021200	FLAT WASHER 3/8
35	2	020600	LOCK WASHER 5/16
36	A/R	480037	SHIM
37	1	360849	PLASTIC SPACER 1/4 DIA.

2 – BLOCK ASSEMBLY 4004EH

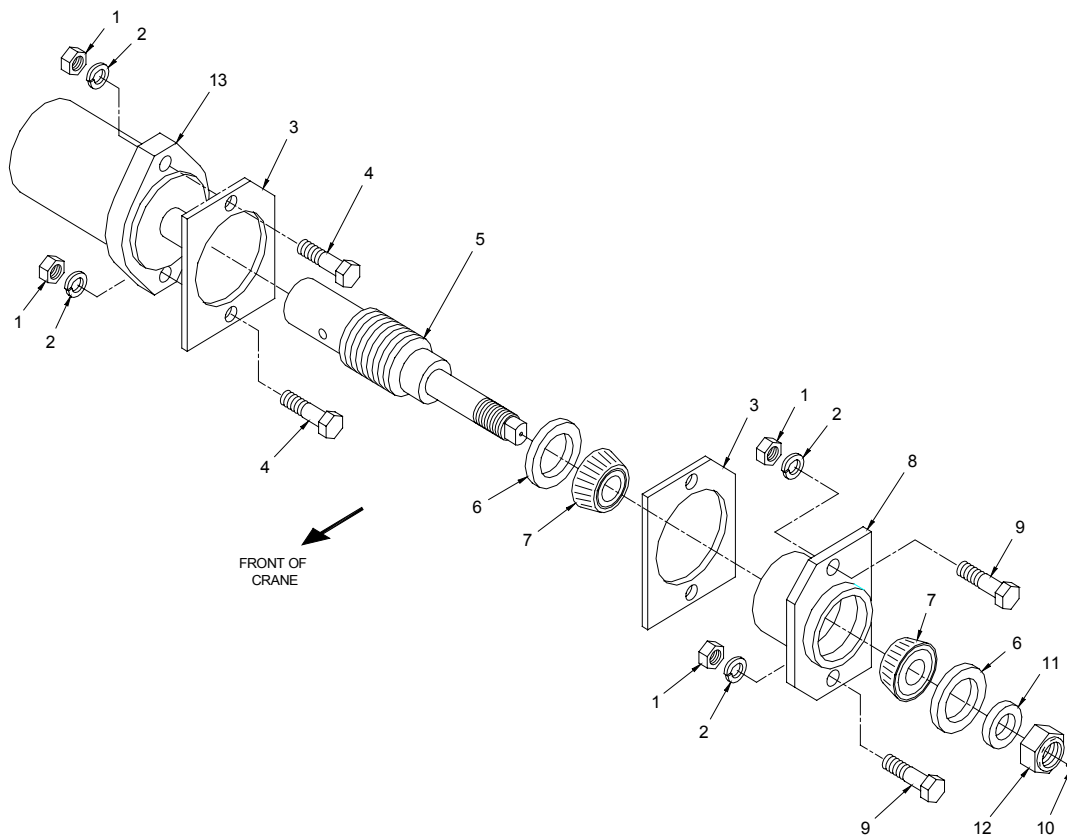


CORD REEL & 2-BLOCK ASS'Y



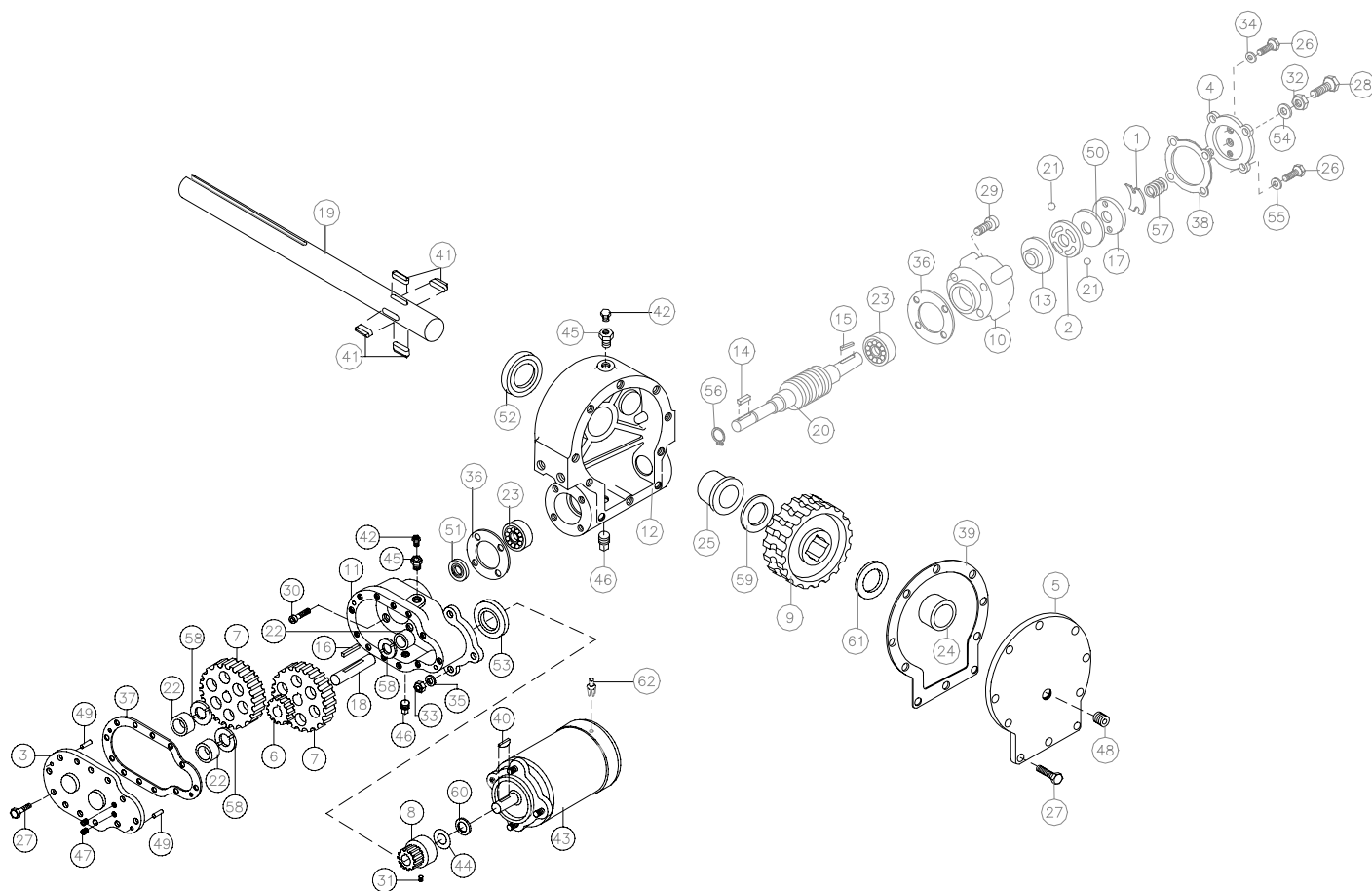
ITEM NO.	QTY.	PART NO.	DESCRIPTION
1	1	360823	2-BLOCK WELDMENT
2	1	366973001	CORD REEL ASSEMBLY w/WEATHER PACK
3	1	360824	2-BLOCK SPRING
4	2	360852	PLASTIC SPACER 3/8 DIA.
5	1	009800	CAPSCREW 3/8NF X 3 1/2
6	1	017400	LOCK NUT 3/8NF
7	2	000610	ROUND HEAD SCREW #6NC X 1 1/2
8	2	019600	LOCK WASHER #6
9	2	015400	NUT #6NC
10	1	646900	SWITCH
11	1	642918	CORD CONNECTOR

HYDRAULIC TURNER ASSEMBLY 4004EH



ITEM NO.	QTY.	PART NO.	DESCRIPTION
1	4	017701	NUT 1/2NC
2	4	021500	LOCK WASHER 1/2
3	2	330484	SPACER
4	2	011603	CAPSCREW 1/2NC X 1 3/4
5	1	404015	WORM SHAFT ASSEMBLY
6	2	330486	OIL SEAL
7	2	330485	BEARING
8	1	330472	BEARING HOUSING
9	2	010201	CAPSCREW 1/2NC X 1 1/2
10	1	239300	GREASE ZERK
11	1	330483	SPACER
12	1	019000	LOCK NUT 7/8NF
13	1	366440	ROTATION MOTOR

HOIST ACTUATOR ***P/N 160411 – MODEL 4004EH***



HOIST ACTUATOR

P/N 160411 – MODEL 4004EH

ITEM NO.	QTY.	PART NO.	DESCRIPTION
1	1	306034	SPRING FLAT
2	1	314008	PLATE CAM
3	1	328106	COVER SPUR GEAR HOUSING
4	1	328128	COVER BRAKE
5	1	324134	COVER WORM GEAR HOUSING
6	1	334001	IDLER GEAR
7	2	334003	SPUR GEAR
8	1	334129	PINION GEAR
9	1	334165	GEAR WORM R.H.
10	1	338007	HOUSING BRAKE
11	1	338203	SPUR GEAR HOUSING
12	1	338273	GEAR HOUSING
13	1	340002	HUB BRAKE
14	1	342023	KEY SQUARE END
15	1	342027	KEY ROUND END
16	1	342033	KEY SQUARE END
17	1	352022	PLATE RETAINER
18	1	356901	SHAFT SPUR
19	1	357172	SHAFT OUTPUT
20	1	368200	WORM R.H. 30:1
21	2	400003	BALL
22	3	402001	BEARING NEEDLE
23	2	402002	BEARING BALL
24	1	412044	BUSHING COVER
25	1	412045	BUSHING HOUSING
26	6	414021	CAPSCREW 1/4-20NC X 1" LG HEX HD Z.P.
27	22	414038	CAPSCREW 1/4-20NC X 3/4" LG HEX HD
28	1	414224	CAPSCREW 3/8-16NC X 1 1/2" LG HEX HD
29	4	414821	CAPSCREW 1/4-20NC X 7/8" LG SOC HD
30	4	414845	CAPSCREW 1/4-20NC X 1" LG SOC HD
31	1	416029	SETSCREW
32	1	418036	NUT JAM 3/8-16NC
33	3	418040	NUT HEX 3/8-24NF REG Z.P.
34	3	418154	WASHER 1/4 FLAT ALUM.

HOIST ACTUATOR
P/N 160411 – MODEL 4004EH

ITEM NO.	QTY.	PART NO.	DESCRIPTION
35	3	418177	LOCKWASHER
36	2	442184	GASKET
37	1	442185	GASKET
38	1	442189	GASKET
39	1	442205	GASKET
40	1	450001	KEY WOODRUFF
41	4	450016	KEY BARTH
42	2	456008	RELIEF FITTING
43	1	458108	MOTOR - 12V
44	1	462015	O - RING
45	2	468002	REDUCER
46	2	468011	PIPE PLUG SQ. HEAD
47	2	468017	PIPE PLUG SOC. HEAD
48	1	468018	PIPE PLUG SOC. HEAD
49	2	470001	PIN
50	1	474001	PLATE THRUST
51	1	486009	OIL SEAL
52	1	486017	OIL SEAL
53	1	486023	OIL SEAL
54	1	486069	THREAD SEAL
55	4	486070	THREAD SEAL
56	1	490003	SNAP RING
57	1	494007	SPRING
58	3	518002	THRUST WASHER
59	1	518015	THRUST WASHER
60	1	518018	FIBER WASHER
61	1	518040	THRUST WASHER
62	1	480015	PLASTIC RIVET

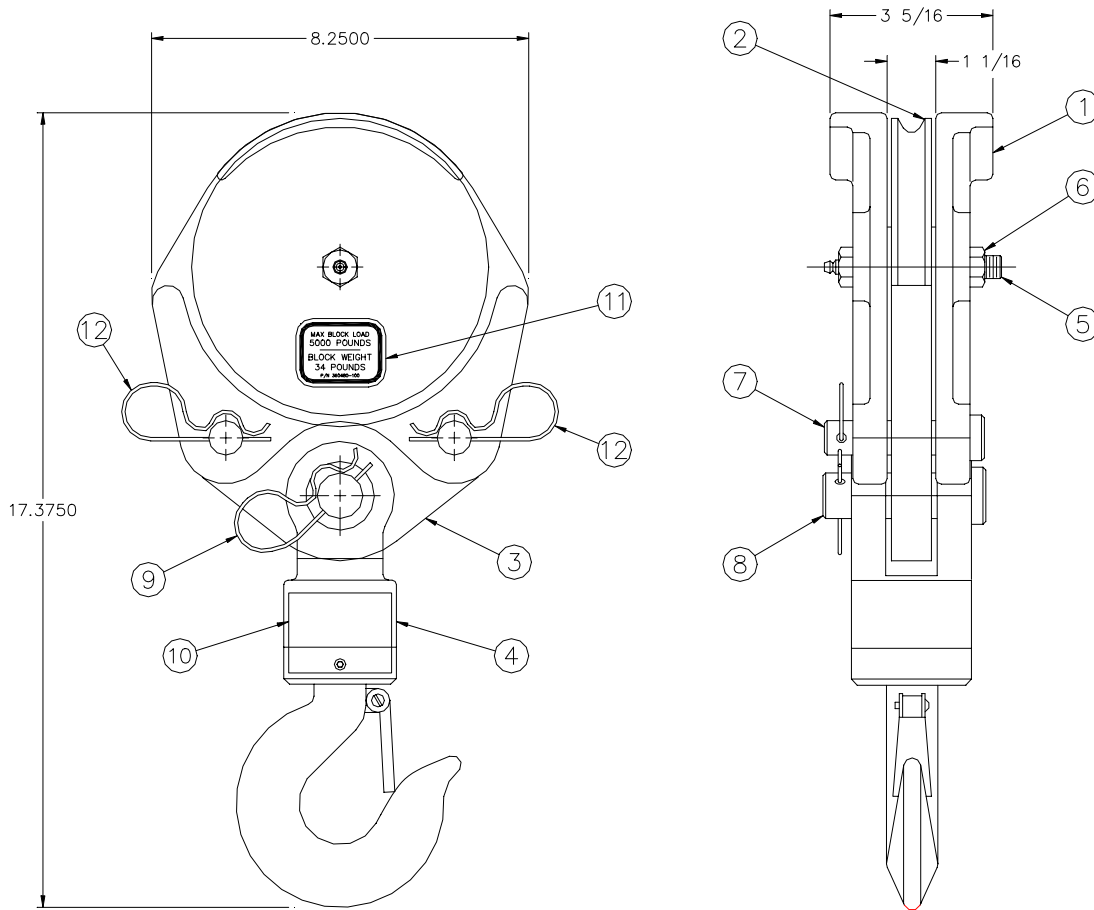
AUTOMATIC SAFETY BRAKE ASSEMBLY (OIL COOLED) HOIST

ASSEMBLY INSTRUCTIONS:

1. Winch has right hand worm and gear. Cable spools over drum. Use number one slots for brake balls (21) in cam plate (2).
2. Install brake hub (13) through brake housing (10) on winch worm with key.
3. Assemble balls (21) in cam plate (2) using hard grease to hold balls in place.
4. Place cam plate (2) on brake hub (13), matching its holes with the balls.
5. Install thrust plate (50).
6. Thread capscrew (28) with jam nut (32) and thread seal (11) through housing cover (4).
7. Place gasket (38) on housing cover (4).
8. Install coil spring (57) on capscrew (28).
9. Install flat spring (1) on capscrew (28).
10. Secure retainer plate (17) and flay spring (1) to housing cover (4) using capscrews (26) and washers (34).
11. Using capscrews (26) and thread seals (55) attach housing cover (4) to brake housing (10).
12. Test brake by shifting wich to **UP** then **DOWN** to see if brake is working in proper rotation. If not, remove housing cover (4) and locate brake balls (21) in opposite set of slots of cam plate (2).
13. Adjust to suit by tightening or loosening capscrew (28) on outside of housing cover (4). When proper adjustment is obtained< secure capscrew (28) with jam nut (32).

TRAVELING BLOCK ASSEMBLY

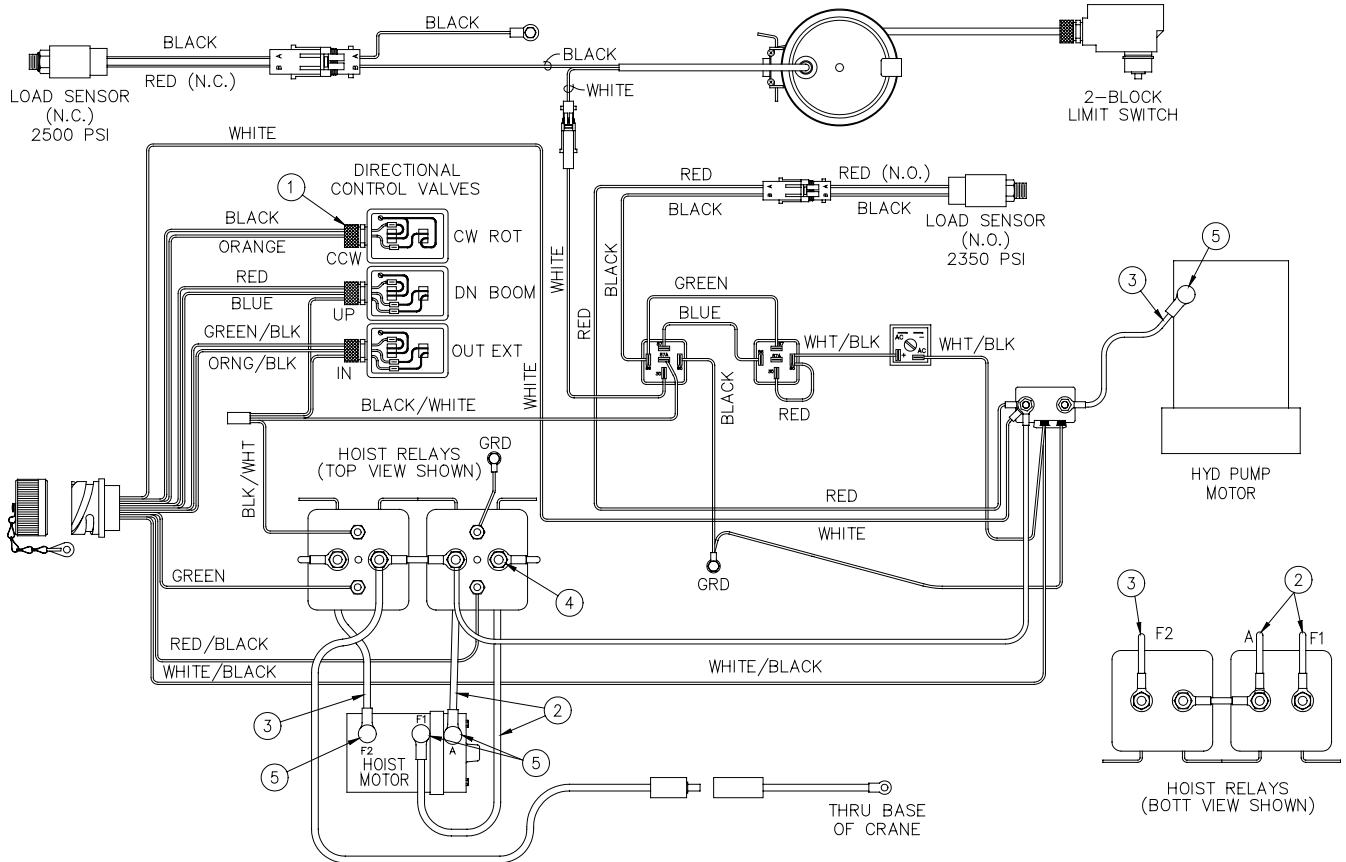
P/N 360480



ITEM	QTY	PART NO.	DESCRIPTION
1	2	480362	SIDE PLATE, TRVLG BLOCK, MACHINED
2	1	480130	SHEAVE ASSEMBLY
3	1	480364	TACKLE, LOWER
4	1	480371	HOOK, SWIVEL, 3 TON
5	1	480372	BOLT, SHEAVE W/ZERK
6	1	017800	NUT, HEX, LOCK, 1/2-20 NF
7	2	480367	PIN, BLOCK
8	1	480368	PIN, SWIVEL HOOK
9	1	360124	PIN, HITCH HAIR PIN
10	2	040518	DECAL, DANGER STAY CLEAR/LOAD
11	2	360480-100	DECAL, MAX LOAD
12	2	366813	PIN, HITCH CLIP

ELECTRICAL ASSEMBLY

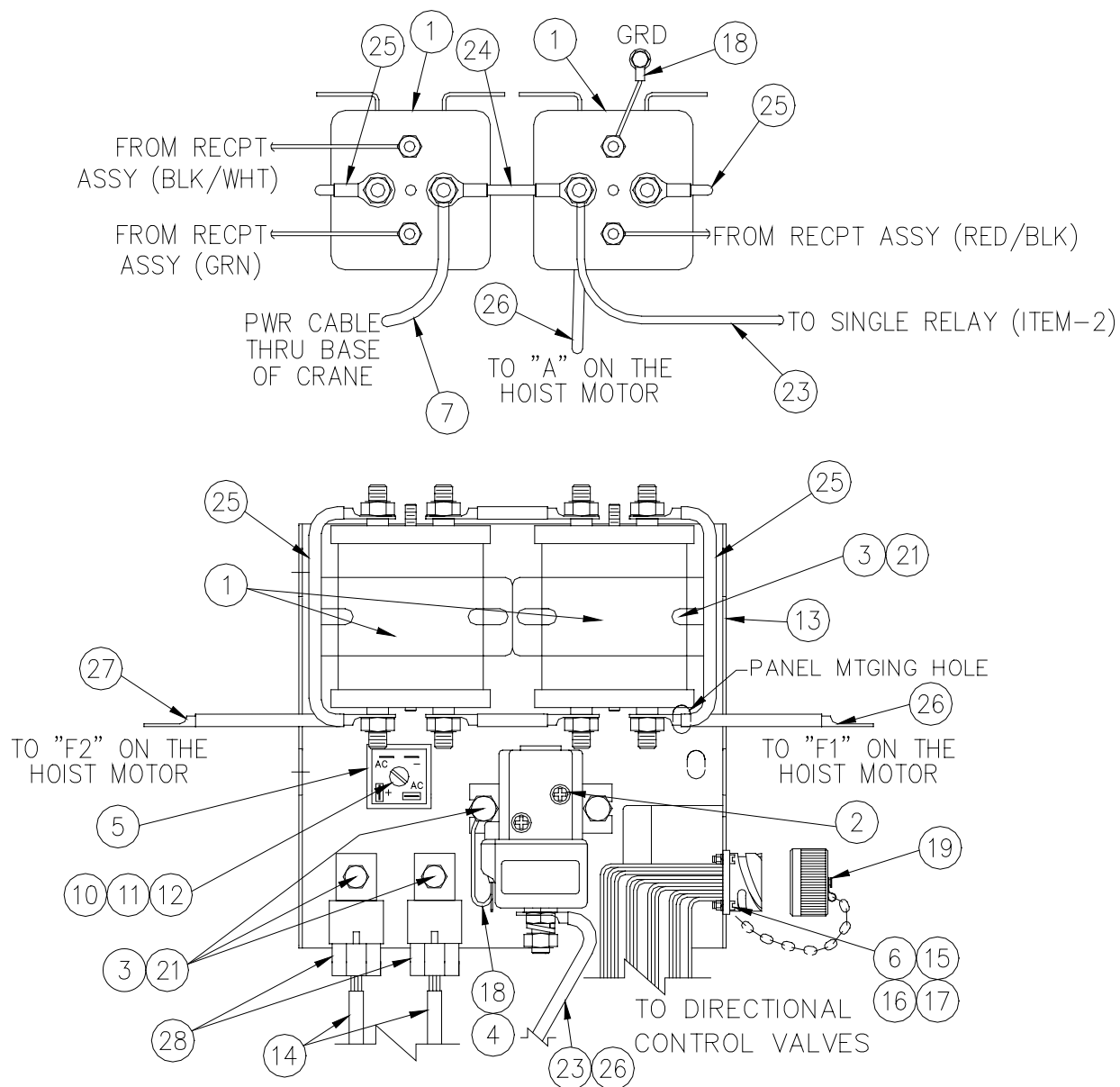
P/N 680073-001 – MODEL 4004EH



ITEM NO.	QTY.	PART NO.	DESCRIPTION
1	3	642908	CORD CONNECTOR
2	2	404165	CONDUCTOR 4 GA X 22"
3	2	404166	CONDUCTOR 4 GA X 24"
4	8	016600	NUT HEX HD 5/16 - 24UNF
5	4	270326	INSULATOR BOOT BLACK

ELECTRICAL PANEL ASSEMBLY

P/N 404170000 – MODEL 4004EH



ELECTRICAL PANEL ASSEMBLY

P/N 404170000 – MODEL 4004EH

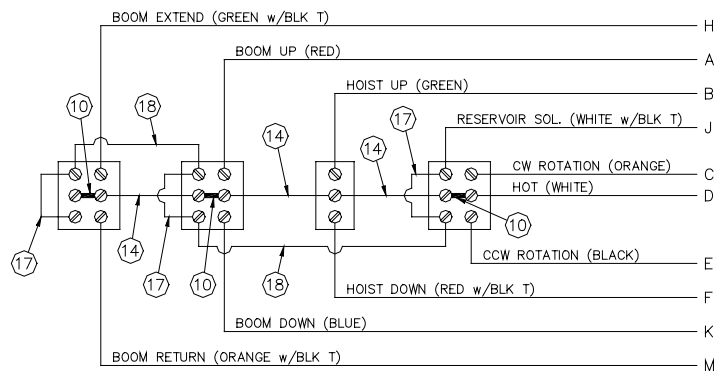
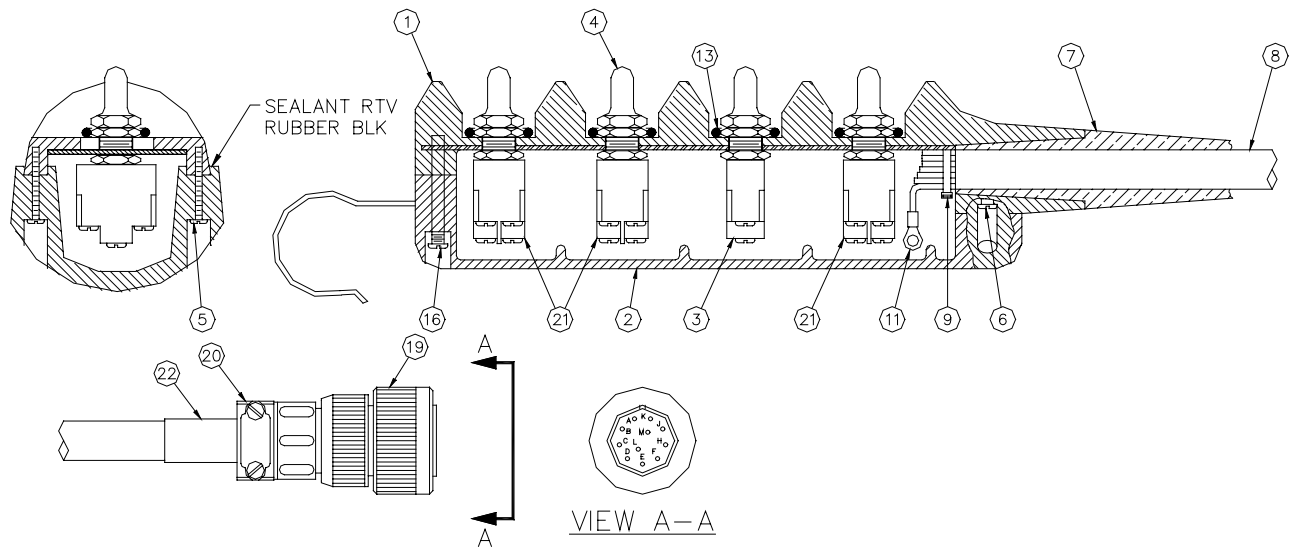
NOTE:

1. ✱ = NOT SHOWN
2. ✱✱ = SEE ELECTRICAL SCHEMATIC FOR
WIRING CONNECTIONS (680073-001)

	28	2	A	320355	RELAY DROP OUT
	27	2	A	404166	CABLE 4 GA x 24
	26	2	A	404165	CABLE 4 GA x 22
	25	1	A	622327-004	CABLE 4 GA x 6 1/4
	24	1	A	622327-003	CABLE 4 GA x 2 7/16
	23	1	A	622327-002	CABLE 4 GA x 9 1/2
✱	22	1	A	366032	LOAD SENSOR ASSY 2500 psi
	21	12	A	736272	NUT INSERT 1/4 X 20
	20	2	A	000300	TERM WIRE RB14 – 10
	19	1	B	320564	CAP RECEPT
	18	2	A	622260-001	WIRE ASSY 16 GA x 3 IN
	17	2	A	019600	WASHER SP LK #6
	16	1	C	680074	RECEPT ASSY
	15	2	A	015400	NUT HEX #6 – 32 UNC
	14	1	C	404061	HARNESS RELAY WIRING
	13	1	B	320805	PANEL RELAY
	12	1	A	019800	WASHER LOCK #10
	11	1	A	015600	NUT HX #10
	10	1	A	002502	SCR RD HD #10-32 x 1 1/4
✱	9	1	B	320543	LOAD SENSOR ASSY 2350 psi
✱	8	1	B	404056	PWR CABLE ASSY
✱	7	1	B	404057	PWR CABLE ASSY
	6	2	A	000404	SCREW HEX 6-32 UNC X 5/8
	5	1	A	751138	RECTIFIER BRIDGE 25 amp
	4	2	A	020201	WASHER INT LOCK 1/4
	3	8	B	005510	WHIZ LOCK SCR 1/4-20UNC x 3/4
	2	1	B	320584	RELAY SINGLE SEALED 100 amp
	1	2	B	404167	SOLENOID SEALED 4004EH
	ITEM	QTY	D/S	PART No.	DESCRIPTION

PENDANT ASSEMBLY

P/N 680065



VIEW FROM BOTTOM

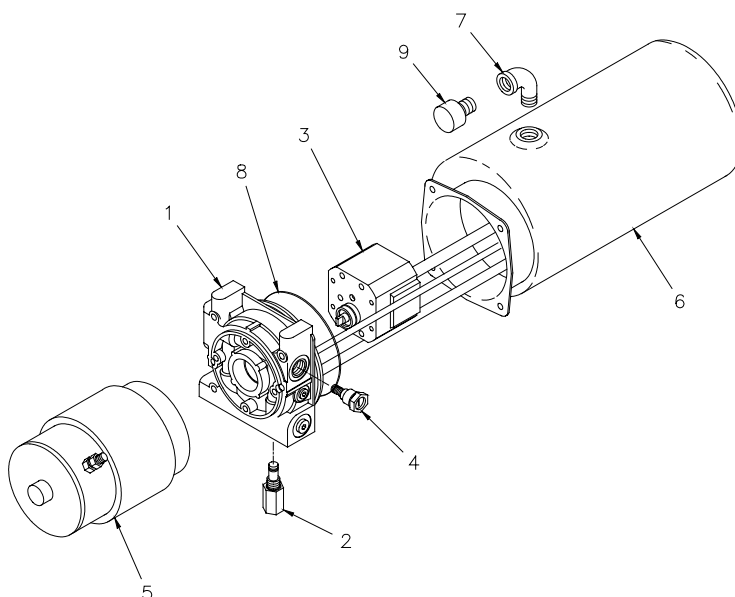
PENDANT ASSEMBLY
P/N 680065

ITEM	QTY	PART NO	DESCRIPTION
1	1	631601	PEND HSNG
2	1	631700	BTM COVER
3	1	622000	TGL SW
4	4	640300	BOOT TGL SW
5	10	001004	SCW ST SLT PAN HD #6 X 3/4
6	2	005101	SCW ST SLT PAN HD #8 X 1 1/4
7	1	633801	CBL ADPT
8	18ft	800632	COND CBL
9	2	REF	TY-RAP CBL TIE (634401)
10	3	636600	JUMPER
11	24	000101	TERM'S T & B
12	4	642100	O-RING
13	1ft	800592	WIRE 16G 600V 1C WHT
14	1	004700	SCW ST SLT PAN HD #8 X 1 1/2
15	3	622346	COND ASSY X 2 1/8
16	2	622347	COND ASSY X 3 1/8
17	1	320563	PLUG 11 PIN BAYONET
18	1	480515	CLP CBL
19	3	634200	TGL SW
20	6in	490243	TBG HEAT SHRINK

NOTES

HYDRAULIC PUMP & RESERVOIR

P/N 320336 --- 4004EH SERIES



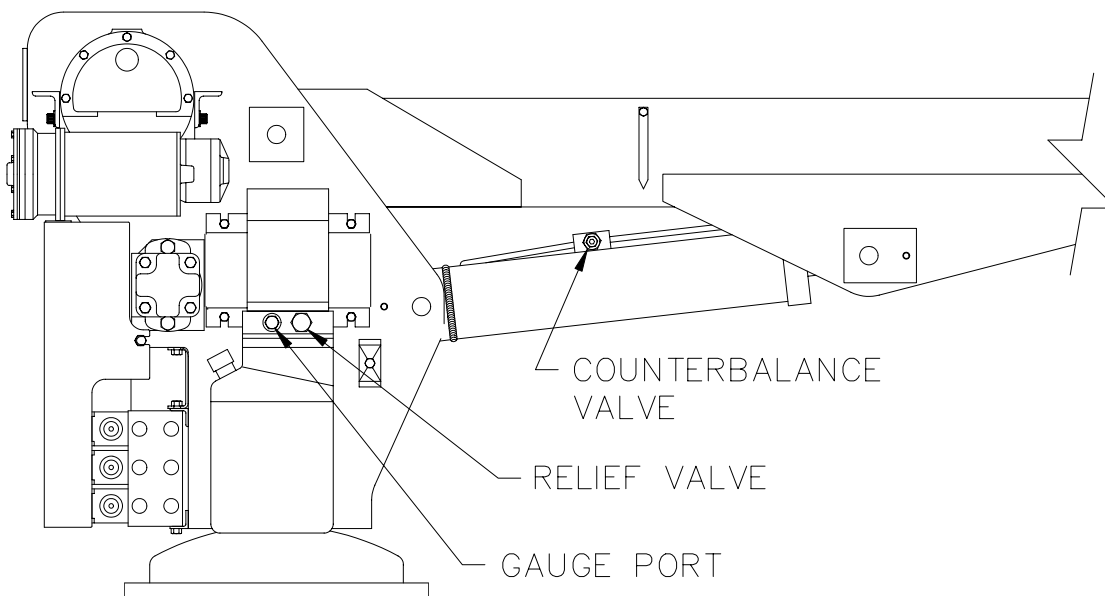
ITEM NO.	QTY.	PART NO.	DESCRIPTION
1	1	320336-005	ADAPTER KIT
2	1	320336-002	RETURN PORT PLUG KIT
3	1	320335-003	PUMP KIT
4	1	320336-003	RELIEF VALVE KIT
5	1	320335-005	MOTOR
6	1	320336-004	RESERVOIR KIT
7	1	320335-008	ELBOW FITTING
8	1	320335-010	O-RING
9	1	200545	BREATHER CAP

HYDRAULICS

4004EH SERIES

Relief Valve Setting

With crane boom supported, remove plug and insert 2500 PSI gauge (see diagram below). Remove from boom support and operate boom retract to end of stroke (fully in). Continue operation of the boom in function and read relief pressure on gage. It should read 2200 PSI. If not, readjust system pressure. Leave gauge installed for counterbalance setting procedure.



RELIEF & COUNTERBALANCE VALVE ADJUSTMENT

Notice:

If system pressure meets or exceeds the overload pressure switch of 2350 PSI, the boom will **LOCK IN THE FULL UP POSITION**. See overload system information in this manual. System pressure well below 2200 PSI will limit the load lifting capabilities of the crane

Counterbalance Valve Adjustment

- { With no load on boom, boom up to an angle of 60 degrees. Then Boom-Down and note pressure reading. If pressure reading is not approximately 1000 PSI, the counterbalance valve requires adjustment. Repeat boom movement for each test.
- { Loosen nut on adjustment screw and do one of the following:
 - v To increase the counterbalance valve setting, turn the adjustment screw counter clockwise. Located on the front of counterbalance valve block towards end of boom. Loosen nut and adjust Allen head screw.

HYDRAULICS

4004EH SERIES

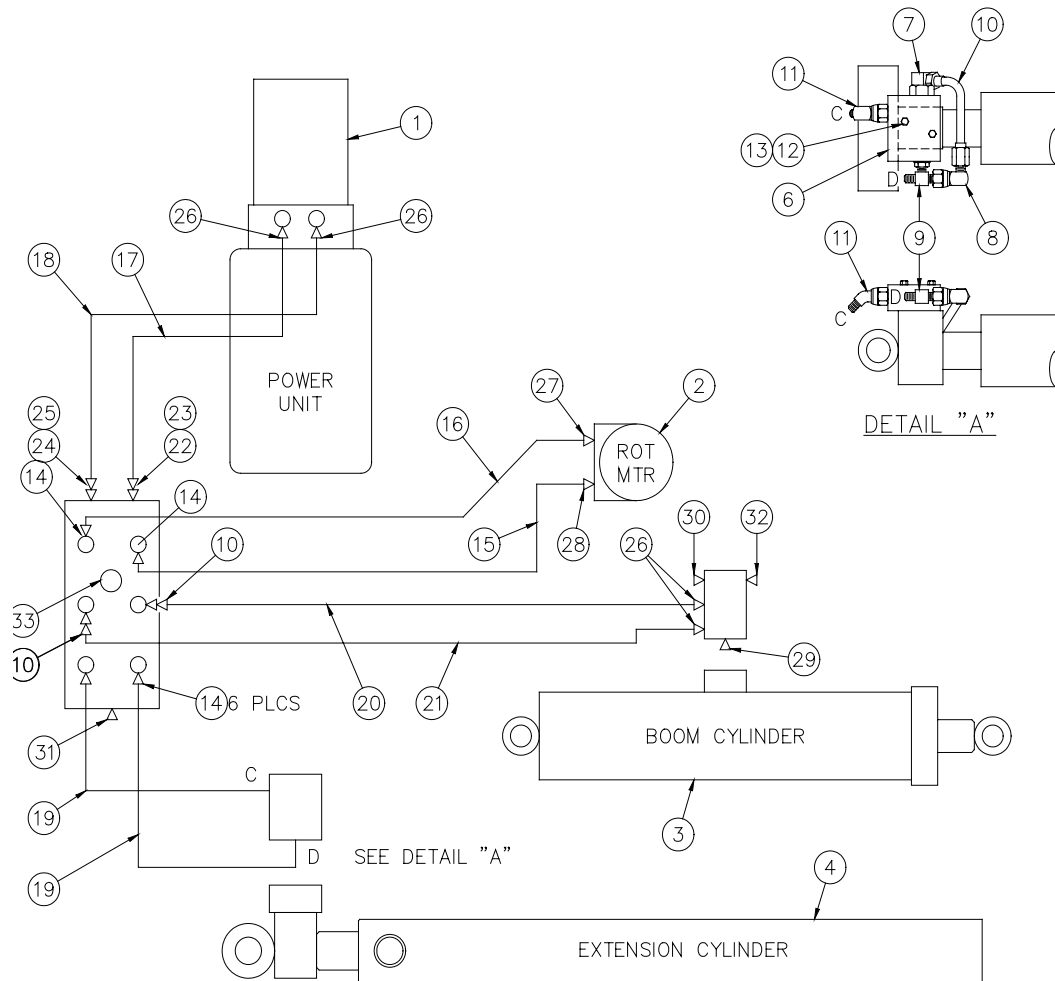
- v To reduce the counterbalance valve setting, turn the adjustment screw clockwise.
- { Tighten nut on adjustment screw and repeat pressure testing procedure if needed to obtain the proper pressure setting.
- { Support the boom and remove the pressure gauge and reinstall -6 plug. Crane is now ready for operation.

Emergency Lowering Procedure

In an emergency situation when it becomes necessary to lower the boom without flow present, the counterbalance valve adjustment can be turned clockwise until the boom begins to descend. Be careful when turning adjustment! Turning too far will cause valve to NOT operate again!

HYDRAULIC ASSEMBLY

P/N 404003 – MODEL 4004EH



HYDRAULIC ASSEMBLY

P/N 404003 – MODEL 4004EH

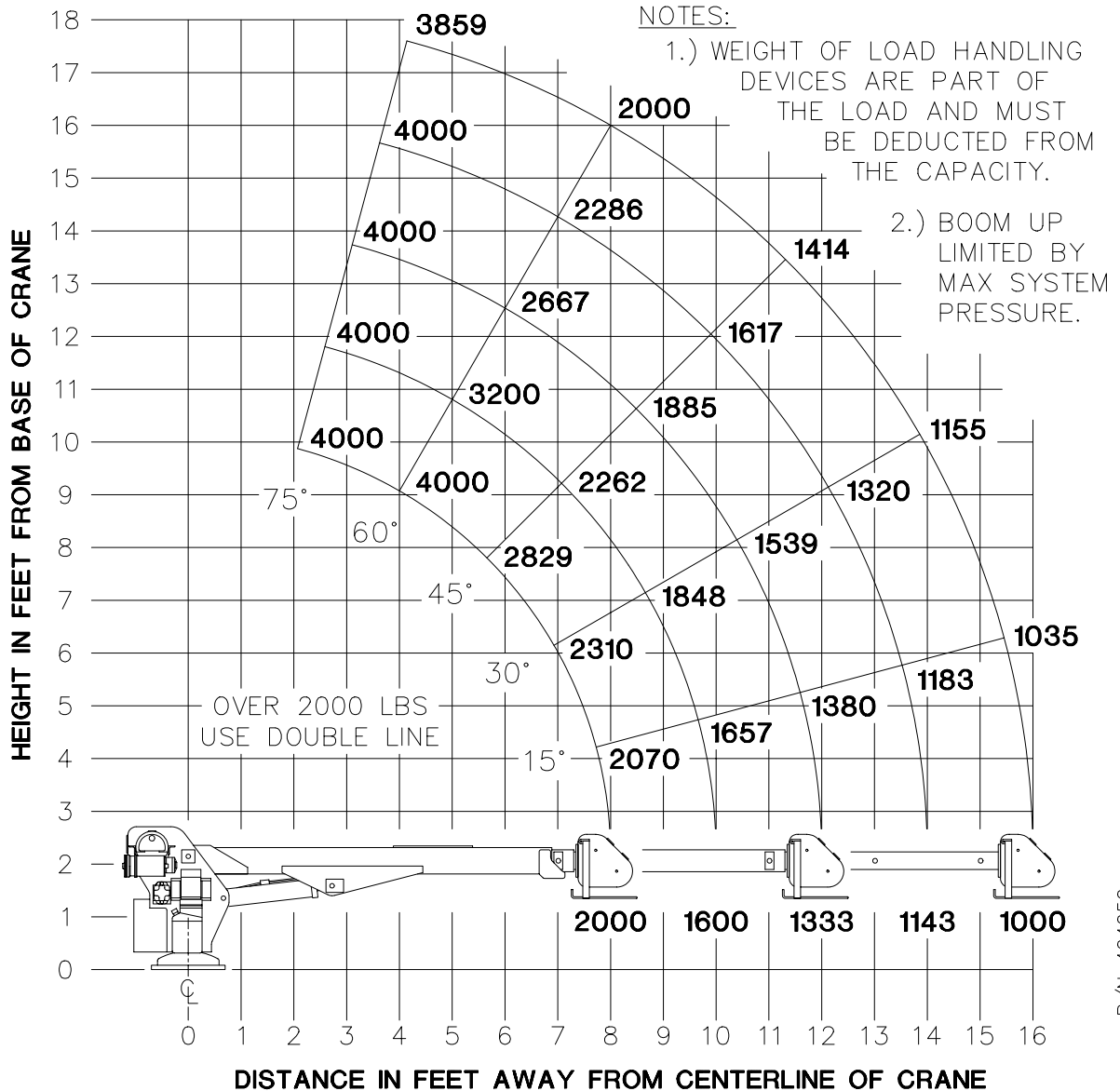
ITEM NO.	QTY.	PART NO.	DESCRIPTION
1	1	320336	POWER UNIT
2	1	366440	ROTATION MOTOR
3	1	404005	BOOM UP CYLINDER
4	1	404006	EXTENSION CYLINDER
5	1	202710	MANIFOLD
6	1	330412	COUNTERBALANCE VALVE
7	1	200892	90 DEG ELBOW -6 NPT/-6 JIC
8	1	480194	90 DEG ELBOW -6 JIC SWIVEL/ -6 JIC
9	1	241168	TEE -6 ORB/-6 JIC RUN
10	1	480212	TUBE ASSEMBLY
11	1	480195	45 DEG ELBOW -6 ORB/-6 JIC
12	2	005810	CAPSCREW 1/4 NC X 1 3/4
*13	4	020200	LOCK WASHER 1/4
14	6	202756	REDUCER -8 ORB/-6 JIC
15	1	404066	TUBE ASSEMBLY
16	1	404067	TUBE ASSEMBLY
17	1	404068	TUBE ASSEMBLY
18	1	404069	TUBE ASSEMBLY
19	2	812203050	HOSE ASSEMBLY
20	1	812212027	HOSE ASSEMBLY
21	1	812215029	HOSE ASSEMBLY
22	1	330058	REDUCER -10 ORB/-6 ORP
23	1	241175	90 DEG ELBOW -6 ORB/-6 JIC
24	1	330274	REDUCER -10 ORB/-8 ORP
25	1	330272	90 DEG ELBOW -8 ORB/-6 JIC
26	4	200876	ADAPTER -6 ORB/-6 JIC
27	1	360884	45 DEG ELBOW -6 JIC-10 O-RING
28	1	490198	90 DEG ELBOW -6 JIC-10 O-RING
29	1	366032	COUNTERBALANCE VALVE CARTRIDGE
30	1	320543	LOAD SENSOR ASSEMBLY
31	2	330072	HEX HEAD PLUG -10 ORB
32	1	000209	PLUG PIPE SOC 1/4
*33	2	480024	CABLE CLAMP
*34	2	005604	SCREW HX HD 1/4 X 1" LG
*35	2	020400	WASHER FLAT 1/4
36	1	404005100	SEAL KIT F/404005 BOOM UP CYL.
37	1	404006100	SEAL KIT F/404006 EXTENSION CYL.
38	1	360490	SEAL KIT F/480027 ROTATION MOTOR

*NOTE: ITEMS 13,33,34 AND 35 ARE PARTS USED ON THE HOIST GEAR BOX COVER.

LOAD CHART 8-12-16

P/N 404050 – 4004EH SERIES

MODEL 4004EH 8-12-16 MAXIMUM LOAD CHART



P/N 404050



P.O. Box 580697 * Tulsa, OK 74158-0697
4707 N. Mingo Rd. * Phone (918) 836-0463

LIMITED WARRANTY 2 YEAR PARTS AND LABOR

Auto Crane will warranty to the consumer for a period of (2) years parts and labor from the date of purchase. Each new Auto Crane unit they sell will be free under normal use and service from defects in material and workmanship. Date of purchase will be honored as the date indicated on the Bill of Sale, which must accompany the Warranty Registration and be on file with Auto Crane. Absent a valid Warranty Registration and appropriate documentation, the original date of manufacture, as indicated by the serial number on the product, will be used to determine the effective date of the 2 year warranty.

The obligation of Auto Crane under this warranty is limited to the replacement or repair of parts that appear to the manufacturer after review and/or inspection to be defective and paid flat rate labor for replacing defective parts. This warranty does not obligate Auto Crane to bear the travel time charges in connection with the replacement or repair of defective parts. Responsibility for customer's claims arising from misapplication, abuse, misuse or alteration of equipment or parts lies with the distributor or user and no warranty obligation is assumed in these circumstances by Auto Crane.

Auto Crane will in no event be liable for any consequential damages or contingent liabilities arising out of the failure of any Auto Crane Product or parts to operate properly.

Auto Crane makes no warranty in respect to component accessories, it being subject to the warranties of their respective manufacturers.

If field service, at the request of the distributor, is rendered and fault is found not to be with Auto Crane's product, the distributor shall pay the time and expense of the field representative.

Claims for service labor or other expenses that have incurred by the buyer without approval or authorization or Auto Crane will not be accepted.

When applying for warranty, claims may be handled by contacting your nearest authorized Auto Crane Distributor. All claims are to be filed in writing on an Auto Crane Warranty Claim Form.

AUTO CRANE COMPANY IS UNDER NO OLIGATION TO EXTEND THIS WARRANTY TO ANY CUSTOMER FOR WHICH AN AUTO CRANE DELIVERY REPORT FORM HAS NOT BEEN COMPLETED AND ON FILE WITH AUTO CRANE COMPANY

