



Superior Lifting Power. Reduced Weight.
Improved Functionality.

FEATURES

LIGHTWEIGHT DESIGN

- Built with advanced materials that provide a high strength-to-weight ratio, allowing for a lighter overall crane without sacrificing lifting capacity.

HIGH LOAD CAPACITY

- Capable of lifting significant loads relative to its size and weight, making it a robust solution for heavy-duty applications.

ADVANCED SAFETY FEATURES

- Integrated with load-sensing technology, safety interlocks, and emergency stop functions to enhance operator safety.

COMPACT AND VERSATILE

- Designed to fit on a wide range of vehicle types, from lighter trucks to larger utility vehicles, offering flexibility for various industries.

DURABLE CONSTRUCTION

- Made with corrosion-resistant and weather-protected materials, ensuring longevity even in harsh environments like construction sites and remote field locations.

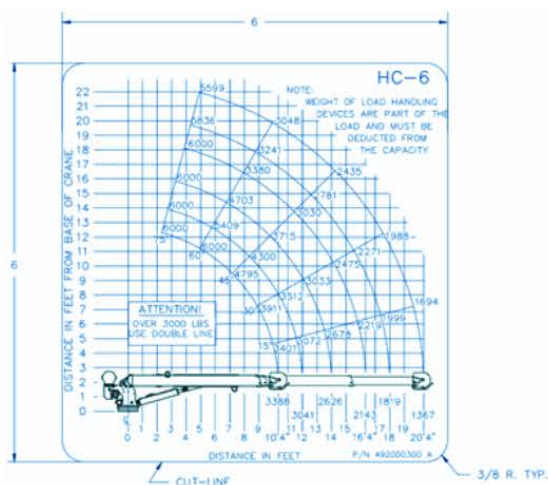


Why Choose the New HC-6

- Maximized Payload Capacity
- Increased Fuel Efficiency
- Lower Transport Cost
- Low Maintenance and Longevity



For More Information
on Autocrane



Capacity Increase

The updated load chart reflects expanded lifting capacities in key areas, ensuring you can handle heavier tasks with ease.

Weight Reduction

Lighter and More Efficient Design
HC-6: Reduced by 220 lb—now only 1200 lb (previously 1420 lb)

Lighter designs mean greater fuel efficiency and improved portability.



FEATURES

LIGHTWEIGHT COMPACT DESIGN

- Optimized for efficiency and adaptable to various vehicle types, while maximizing payload.

ELECTRIC/HYDRAULIC-POWERED OPERATION

- Runs on a battery-powered system, eliminating the need for diesel or gasoline, with a power source designed for efficient lifting and extended use.

ENHANCED SAFETY AND CONTROL FEATURES

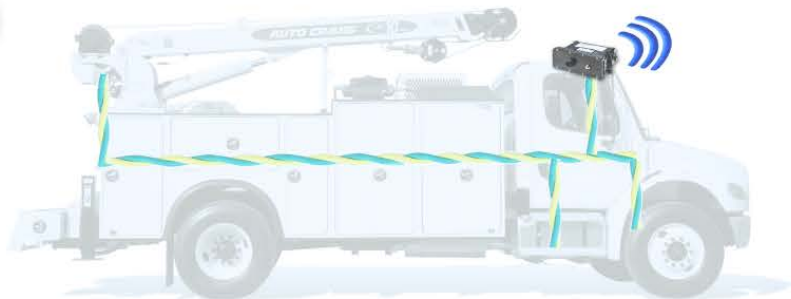
- Equipped with electric controls, load sensors, and safety interlocks tailored for smooth, responsive operation and secure load handling.

QUIET AND EMISSION FREE

- Generates minimal noise and zero emissions, making it suitable for regulated environments, urban areas, and sustainability-focused projects.

ECO-FRIENDLY BATTERY SYSTEM

- Includes a long-life, rechargeable battery designed for multiple cycles and quick charging, allowing for minimal downtime.



Why Choose the New EHC-6

- Reduced Operating Cost
- Sustainable Operation and Compliance
- Ideal for Urban and Environmentally Sensitive Areas
- Lower Total Cost of Ownership



NEW MODEL FEATURES 60 FEWER COMPONENTS. EASIER TO MAINTAIN

Weight Reduction

- EHC-6: Reduced by 400 lb—now only
- 1210 lb (previously 1610 lb)
- Lighter designs mean greater
- fuel efficiency and improved portability.



**For More
Information
on Autocrane**

