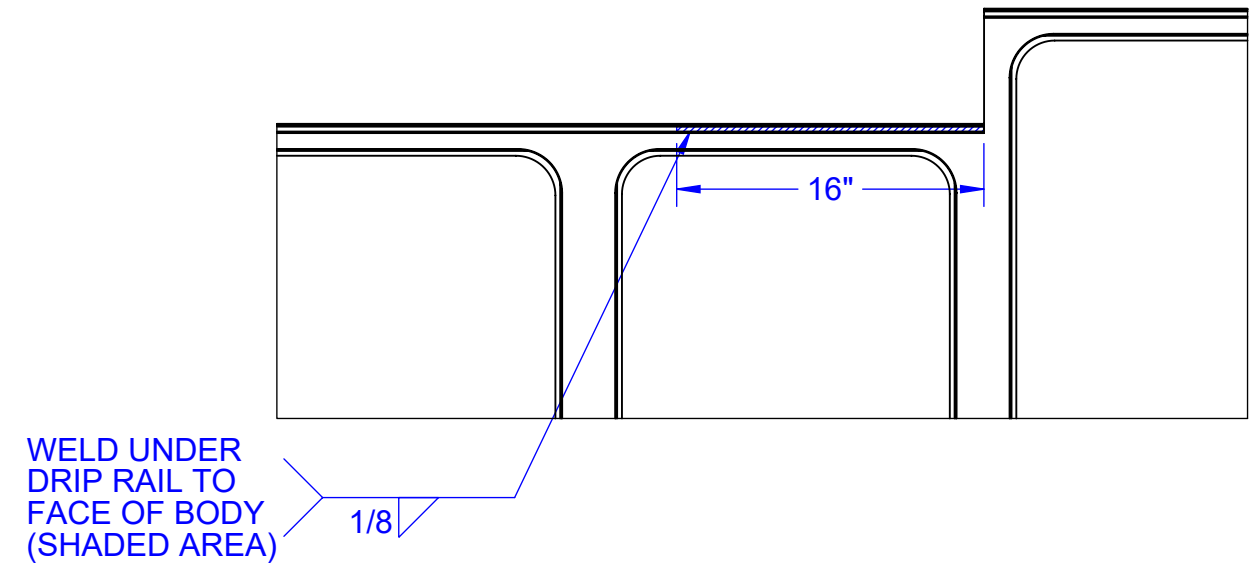
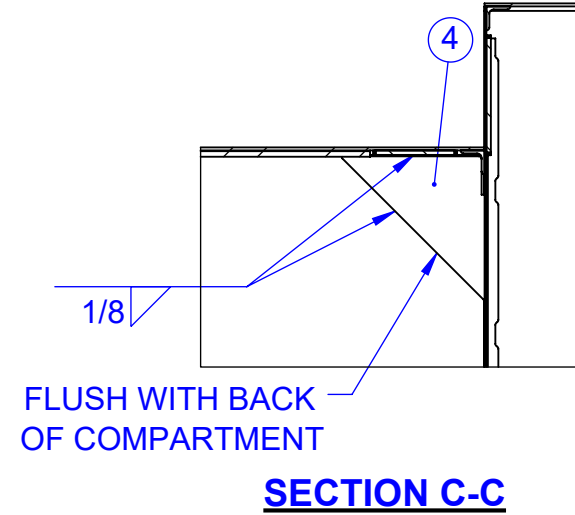
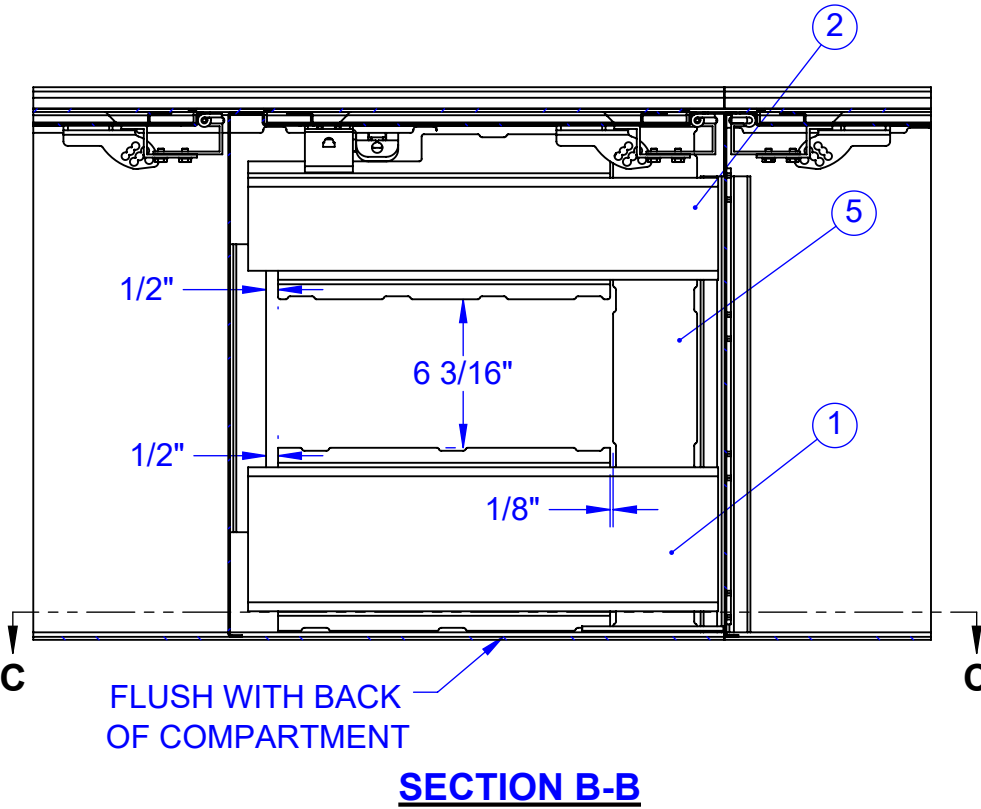


WELD: MINIMUM YIELD 36,000 PSI
BODY SHOWN AS REFERENCE



NOTES	BOM REVS	ITEM NO.	QTY	PART NUMBER	DESCRIPTION
		1	1	715068031	CHANNEL, BOOM SUPPORT REINFORCEMENT. 120CA. RETRO
		2	1	715068032	CHANNEL, BOOM SUPPORT REINFORCEMENT W/CUTOUT. 120CA RETRO
		3	1	715068033	PLATE, REINFORCEMENT, 19" X 5", RETROFIT
		4	1	715068006	ANGLE, BOOM SUPPORT REINFORCEMENT
		5	1	715068034	PLATE, REINFORCEMENT, 21" X 3.5" RETRO
1		6	1	715068046	MANUAL, TITAN 50-85 120CA REINFORCEMENT, INSTALLATION

NOTE:
1. INCLUDE 715068046 MANUAL PAGES WITH KIT

UNLESS OTHERWISE NOTED
ALL DIMENSIONS ARE IN INCHES.

TOLERANCES UNLESS OTHERWISE SPECIFIED:
 ANGLES ± 1/2° .XX ± .030
 FRACTIONAL ± 1/16 .XXX ± .010

REMOVE ALL BURRS AND SHARP EDGES. DO NOT SCALE THIS DRAWING.
 TOLERANCES NOT SHOWN ABOVE ARE PER ANSI Y14.5-1973

THIS PRINT IS THE PROPERTY OF AUTO CRANE CO. AND MUST NOT BE USED IN ANY MANNER DETRIMENTAL TO THEIR INTERESTS.

AUTO CRANE
 4707 NORTH MINGO ROAD
 P.O. BOX 580697
 TULSA, OKLAHOMA 74158-0697
 918-836-0463

TITLE: **KIT, REINFORCEMENT, TITAN 120CA, RETROFIT**

DRAWN BY: CDS	DATE: 1/13/20	SIZE: B	DRAWING NO.: 715068042	REV: A
SCALE: DO NOT SCALE DRAWING		WEIGHT: 26.49 LBS	SHEET: 1 OF 1	

700300	A	PRODUCTION RELEASE	1/13/20	CDS
ECN#	REV.	DESCRIPTION	DATE	BY
REVISIONS				